

Web-Based Enterprise Services

Installation Guide

This document provides instructions and supporting information necessary to install, configure, and verify HP Web-Based Enterprise Services (WEBES) on Windows®, HP-UX, Linux, and HP OpenVMS systems.

To access the latest revision of this document containing updated information, please visit the WEBES Web site:

<http://www.hp.com/services/webes>

Rev. 11/14/07

Operating Systems: Microsoft® Windows 2000, Windows Server 2003 and Windows XP
HP-UX PA-RISC version 11.11 or higher
HP-UX Integrity Servers 11.23 or higher
Red Hat Enterprise Linux Application Server 3.0 and 4.0
Red Hat Enterprise Linux Enterprise Server 3.0 and 4.0
HP OpenVMS Integrity (Itanium) version 8.2-1 or higher
HP OpenVMS Alpha version 7.3-2, 8.2 or higher

Software Version: WEBES Version 5.1



Hewlett-Packard Company
Technical Publications
305 Rockrimmon Boulevard South
Colorado Springs, Colorado 80919 • U.S.A.

October 2006

© 2006 Hewlett-Packard Company

Microsoft, Windows, and Windows NT are US registered trademarks of Microsoft Corporation. Intel is a US registered trademark of Intel Corporation. UNIX is a registered trademark of The Open Group. Java is a US trademark of Sun Microsystems, Inc.

Confidential computer software. Valid license from Hewlett-Packard required for possession, use or copying. Consistent with FAR 12.211 and 12.212, Commercial Computer Software, Computer Software Documentation, and Technical Data for Commercial Items are licensed to the U.S. Government under vendor's standard commercial license.

Hewlett-Packard shall not be liable for technical or editorial errors or omissions contained herein. The information is provided "as is" without warranty of any kind and is subject to change without notice. The warranties for Hewlett-Packard products are set forth in the express limited warranty statements accompanying such products. Nothing herein should be construed as constituting an additional warranty.

This service tool software is the property of, and contains confidential technology of Hewlett-Packard Company or its affiliates. Possession and use of this software is authorized only pursuant to the Proprietary Service Tool Software License contained in the software or documentation accompanying this software.

Hewlett-Packard service tool software, including associated documentation, is the property of and contains confidential technology of Hewlett-Packard Company or its affiliates. Service customer is hereby licensed to use the software only for activities directly relating to the delivery of, and only during the term of, the applicable services delivered by Hewlett-Packard or its authorized service provider. Customer may not modify or reverse engineer, remove or transfer the software or make the software or any resultant diagnosis or system management data available to other parties without Hewlett-Packard's or its authorized service provider's consent. Upon termination of the services, customer will, at Hewlett-Packard's or its service provider's option, destroy or return the software and associated documentation in its possession.

Examples used throughout this document are fictitious. Any resemblance to actual companies, persons, or events is purely coincidental.

Change Summary

The following table summarizes the changes to this document:

Revision	Description
29-June-2007	Initial 5.0 copy

Contents

Title Page	i
Copyright Statement	ii
Change Summary	iii
List of Figures	xi
List of Tables	xiii
1 General Information	1-1
1.1 What is WEBES?	1-2
1.1.1 The Tools	1-2
1.1.2 WEBES Common Components	1-2
1.1.3 The WCCProxy	1-2
1.1.3.1 WCCProxy Version in WEBES and ISEE.	1-3
1.2 New in this Release	1-4
1.3 Hardware Requirements	1-5
1.4 Operating Systems Requirements	1-6
1.4.1 Operating System Upgrades to Support Daylight Saving Time Rule Changes	1-7
1.5 Installation Kits	1-7
1.6 Upgrades	1-8
1.7 This Document	1-8
1.8 Further Information	1-9
2 Installing on Windows	2-1
2.1 Pre-Installation	2-2
2.1.1 WEBES Common System Requirements.	2-2
2.1.2 SEA System Requirements.	2-6
2.1.3 CCAT System Requirements	2-8
2.1.4 RCM Transition	2-8
2.1.5 Permissions.	2-9
2.1.6 Archiving and Cleaning the Windows Event Log	2-9
2.1.7 Installing on Terminal Servers	2-10
2.1.8 Installing on a Storage Management Appliance.	2-11
2.1.9 Installing on an Enterprise Virtual Array (EVA) System	2-12

Contents

2.1.9.1	Installation Prompts When File Fails to Delete	2–12
2.1.10	Pre-Installation Requisites for Integrity Automatic Analysis for WEBES V4.5.1	2–13
2.2	Installing WEBES	2–14
2.2.1	Installing WEBES on Incorrect Platforms.	2–23
2.3	Post-Installation	2–23
2.3.1	Adding a Tool	2–24
2.3.2	Determining Which Tools are Installed.	2–24
2.3.3	Determining Which Versions are Installed	2–25
2.3.4	Storing User Files	2–26
2.3.5	Disabling EVA SNMP Trap Notifications	2–26
2.3.6	Completing EVA Managed Entity Data	2–27
2.3.6.1	Completing Data for Command View EVA Servers	2–27
2.3.6.2	Completing Data for EVAs	2–27
2.3.7	Adding an EVA After Installing WEBES	2–28
2.3.8	Installing or Upgrading ISEE Client After Installing or Upgrading WEBES.	2–29
2.3.9	Configuring SNMP Traps to Send Notifications to HP-SIM	2–30
2.4	Upgrading WEBES	2–30
2.5	Downgrading WEBES.	2–31
2.6	Uninstalling WEBES.	2–31
2.6.1	Uninstalling Individual WEBES Tools	2–31
2.6.2	Uninstalling All WEBES Tools.	2–32
2.6.3	Uninstalling on Terminal Servers	2–33
2.6.4	Uninstalling on a Storage Management Appliance	2–33
2.6.5	WCCProxy Refresh Issue	2–34
2.6.6	Manual Removal of WCCProxy	2–34

3 Installing on HP-UX

3–1

3.1	Pre-Installation.	3–2
3.1.1	WEBES Common System Requirements	3–2
3.1.2	SEA System Requirements	3–3
3.1.3	CCAT System Requirements.	3–4
3.1.4	Permissions	3–4
3.1.5	Extracting the Installation Kit	3–4
3.2	Installing WEBES	3–4
3.2.1	Component Installation	3–5
3.2.2	Interactive Configuration Utility	3–6
3.2.2.1	Initial Configuration	3–6
3.2.2.2	Configuration Options.	3–8
3.3	SEA Installation Notes.	3–9
3.4	CCAT Installation Notes	3–10
3.5	Post-Installation	3–10
3.5.1	Path Update	3–10
3.5.2	Determining Which Tools are Installed.	3–10
3.5.3	Determining Which Versions are Installed	3–10
3.5.4	Storing User Files	3–11
3.6	Upgrading WEBES	3–11
3.7	Uninstalling WEBES.	3–12
3.7.0.1	Uninstalling Individual WEBES Tools	3–12
3.7.0.2	Uninstalling All WEBES Tools.	3–12

4 Installing on Linux 4-1

4.1 Pre-Installation	4-2
4.1.1 WEBES Common System Requirements.	4-2
4.1.2 SEA System Requirements.	4-3
4.1.3 CCAT System Requirements	4-4
4.1.4 Permissions.	4-4
4.1.5 Extracting the Installation Kit	4-4
4.2 Installing WEBES.	4-5
4.2.1 Common Component Installation.	4-5
4.2.2 Interactive Configuration Utility	4-6
4.2.2.1 Initial Configuration.	4-6
4.2.2.2 Configuration Options	4-7
4.3 SEA Installation Notes	4-9
4.4 CCAT Installation Notes	4-9
4.5 Post-Installation	4-9
4.5.1 Path Update	4-9
4.5.2 Determining Which Tools are Installed	4-9
4.5.3 Determining Which Versions are Installed	4-10
4.5.4 Storing User Files.	4-10
4.6 Upgrading WEBES.	4-11
4.7 Uninstalling WEBES	4-12
4.7.1 Using the Interactive Utility	4-12
4.7.1.1 Uninstalling Individual WEBES Tools	4-12
4.7.1.2 Uninstalling All WEBES Tools	4-12
4.7.2 Using the rpm Utility	4-12

5 Installing on OpenVMS 5-1

5.1 Pre-Installation	5-2
5.1.1 WEBES Common System Requirements.	5-2
5.1.1.1 OpenVMS Patches	5-6
5.1.2 WEBES on Integrity (Itanium) Servers	5-13
5.1.3 SEA System Requirements.	5-14
5.1.4 CCAT System Requirements	5-16
5.1.5 Privileges	5-16
5.1.6 Archiving and Cleaning the Error Log	5-17
5.1.7 Verifying the Serial Number	5-17
5.1.8 Cluster Node Access to Install Directory	5-18
5.1.9 Shared Non-System Disk Installations.	5-19
5.1.10 Extracting the Installation Kit	5-20
5.2 Installing WEBES.	5-21
5.2.1 Installing SEA	5-24
5.2.2 Installing CCAT	5-24
5.2.3 Finishing the WEBES Installation	5-24
5.3 Post-Installation	5-25
5.3.1 Adding and Removing a Cluster Node.	5-25
5.3.1.1 Adding a Cluster Node to WEBES	5-25
5.3.2 Correcting Node Data in Clusters.	5-25
5.3.3 Configuration Options	5-27
5.3.4 Determining Which Tools are Installed	5-28

Contents

5.3.5 Determining Which Versions are Installed	5-30
5.3.6 Storing User Files	5-30
5.3.7 Timestamp Adjustments	5-31
5.3.8 Alternate Boot Start and Stop Methods	5-31
5.4 Upgrading WEBES	5-35
5.5 Uninstalling WEBES	5-36
5.5.1 Removing a Tool	5-36
5.5.2 Removing all of WEBES	5-36
5.5.3 Clusters	5-37

Glossary

List of Figures

2-1	Adding Domain Admins	2-9
2-2	Sample WEBES Tool Selection (Destination Folder)	2-15
2-3	Sample WEBES Tool Selection (Custom Setup)	2-16
2-4	Configuration Wizard - User Information	2-17
2-5	Configuration Wizard - SMTP Notification Setup for SEA	2-17
2-6	Configuration Wizard - SMTP Notification Setup for CCAT	2-18
2-7	Configuration Wizard - Profile and Notification Details	2-18
2-8	Configuration Wizard - Configure WEBES	2-19
2-9	Command Prompt - WEBES Service Obligation Validation	2-19
2-10	Delaying the Initial SEA Scan	2-22
2-11	WEBES Install Complete	2-23
2-12	Adding a WEBES Tool	2-24
2-13	Removing a WEBES Tool	2-32
5-1	Shared Non-System Disk Installation	5-20

List of Tables

2-1	Windows Browser Requirements	2-7
2-2	WEBES Information Required During Installation	2-19
2-3	Determining WEBES and Tool Versions	2-25
3-1	HP-UX Browser Requirements	3-3
3-2	Customer Information Required for Initial Configuration	3-7
3-3	System Information Required for Initial Configuration	3-7
3-4	Service Obligation Information Required for Initial Configuration	3-8
3-5	Configuration Options	3-9
3-6	Determining WEBES and Tool Versions	3-10
4-1	Linux Browser Requirements	4-3
4-2	Customer Information Required for Initial Configuration	4-6
4-3	System Information Required for Initial Configuration	4-7
4-4	Service Obligation Information Required for Initial Configuration	4-7
4-5	Configuration Options	4-8
4-6	Determining WEBES and Tool Versions	4-10
5-1	Patch List for WEBES v5.0 on OpenVMS v7.3-2 (Alpha)	5-7
5-2	Recommended Patch Installation Order OpenVMS v7.3-2	5-8
5-3	Patch List for WEBES v5.0 on OpenVMS v8.2 (Alpha)	5-9
5-4	Recommended Patch Installation Order OpenVMS v8.2 (Alpha)	5-10
5-5	Recommended Patch List OpenVMS v8.3 (Alpha)	5-10
5-6	Recommended Patch Installation Order OpenVMS v8.3 (Alpha)	5-10
5-7	Patch List for WEBES v5.0 on OpenVMS v8.2-1 (Integrity)	5-11
5-8	Recommended Patch Installation Order OpenVMS v8.2-1 (ia64)	5-12
5-9	Patch List for WEBES v5.0 on OpenVMS v8.3 (Integrity)	5-12
5-10	Recommended Patch Installation Order OpenVMS v8.3 (Integrity)	5-13
5-11	OpenVMS Browser Requirements	5-14
5-12	WEBES Information Required During Installation	5-23
5-13	Service Obligation Information Required for WEBES	5-23
5-14	Configuration Options	5-28
5-15	Determining WEBES and Tool Versions	5-30

General Information

This chapter provides an overview of the WEBES suite of tools and this document. Detailed instructions for installing WEBES on each supported operating system are provided in subsequent chapters.

What is WEBES?	page 1–2
New in this Release.	page 1–4
Hardware Requirements	page 1–5
Operating Systems Requirements	page 1–6
Installation Kits	page 1–7
Upgrades	page 1–8
This Document	page 1–8
Further Information.	page 1–9

General Information

1.1 What is WEBES?

1.1 What is WEBES?

Web-Based Enterprise Services ([WEBES](#)) is a suite of applications developed within HP for system diagnosis of computing platforms and on a variety of connected equipment, such as storage arrays.

1.1.1 The Tools

WEBES consists of a master installation kit that allows you to install any or all of the following components:

- System Event Analyzer ([SEA](#))—for remote system event monitoring
- Computer Crash Analysis Tool ([CCAT](#))—for remote operating system failure analysis

1.1.2 WEBES Common Components

The WEBES common components (WCC) are required portions of WEBES that allow the tool suite to function as an integrated installation. The WCC are separate from the individual tools in the WEBES suite and are almost always transparent to the user.

1.1.3 The WCCProxy

Like the WCC, the WCCProxy is another required part of WEBES. After WEBES installation, the WCCProxy appears as a separately installed kit and represents WEBES functionality not developed in the Java™ environment.

The WCCProxy contains functions that allow WEBES to interact properly with the operating system and with HP Instant Support Enterprise Edition (ISEE). The ISEE Client kit also includes a copy of the WCCProxy. Here are a few additional guidelines regarding the WCCProxy:

- WEBES and the ISEE Client need the WCCProxy, so avoid uninstalling just the WCCProxy if you have WEBES or the ISEE Client installed.
- If you install either product, and the other is not installed, it will install its WCCProxy.
- If you install either product, and the other is already installed, it will leave the WCCProxy alone unless its WCCProxy is newer, in which case it will replace the WCCProxy (which will still work with the other product).
- Uninstalling WEBES or ISEE will leave the WCCProxy installed if the other product is still installed.
- Uninstalling WEBES or ISEE will uninstall the WCCProxy if the other product is not installed.

Refer to the WEBES Release Notes for any current issues regarding the WCCProxy, how it is shared by WEBES and ISEE, and how WEBES and ISEE should be installed or removed for proper functioning of WCCProxy.

1.1.3.1 WCCProxy Version in WEBES and ISEE

The following table indicates the WCCProxy versions that have been packaged in WEBES and ISEE up to this point. This is presented for information only and no user action is required here. The WCCProxy installation program replaces the installed WCCProxy if the installing version is higher and the WCCProxy removal program removes WCCProxy if there are no more tools (such as WEBES or ISEE) using it.

Product	WCCProxy Version Included
WEBES v4.3.0	WCCProxy v1.0.0
WEBES v4.3.1	WCCProxy v1.2.0
WEBES v4.3.2	WCCProxy v1.2.1
WEBES v4.3.3	WCCProxy v1.2.2
WEBES v4.3.4	WCCProxy v1.2.3
WEBES v4.4	WCCProxy v1.3.1
WEBES v4.5	WCCProxy v1.4.0
WEBES v4.4.1	WCCProxy v1.3.2
WEBES v4.4.2	WCCProxy v1.3.3
WEBES v4.4.3	WCCProxy v1.3.4
WEBES v4.4.4	WCCProxy v1.3.4
WEBES v4.5	WCCProxy v1.4.0
WEBES v4.5.1	WCCProxy v1.4.1
ISEE A.03.50 (Linux)	WCCProxy v1.0.0
ISEE A.03.50 (OpenVMS Alpha)	WCCProxy v1.1.0
ISEE A.03.50 (Windows)	WCCProxy v1.2.0
ISEE A.03.70 (Windows)	WCCProxy v1.2.0
ISEE A.03.90 (Windows and OpenVMS Alpha)	WCCProxy v1.3.1
ISEE A.03.95 (Windows, Linux, and OpenVMS Alpha)	WCCProxy v1.3.2
ISEE for HP-UX PA-RISC and Integrity, and for Windows Integrity	WCCProxy has not been included in these ISEE kits yet

1.2 New in this Release

Integrity Servers

- ITANIUM_SX1000
 - Enhanced Trap Notification for HP-SIM display
 - Enhanced SEL support for "Watchdog Timeout Events" and BMC / IPMI battery failures
 - Enhanced Multi-Event Analysis
 - Bug Fixes
- ITANIUM_SX2000
 - Enhanced Trap Notification for HP-SIM display
 - Enhanced SEL support for "Watchdog Timeout Events" and BMC / IPMI battery failures
 - Enhanced Multi-Event Analysis
 - Bug Fixes
- ITANIUM_ZX2
 - SEL and MCA analysis support for the Integrity BL860c Blade Server running Microsoft Windows 2003
 - Enhanced Trap Notification for HP-SIM display
 - Enhanced SEL support for "Watchdog Timeout Events" and BMC / IPMI battery failures
 - Enhanced Multi-Event Analysis
 - Bug Fixes
- ITANIUM_ZX1
 - Enhanced Trap Notification for HP-SIM display
 - Enhanced SEL support for "Watchdog Timeout Events" and BMC / IPMI battery failures
 - Enhanced Multi-Event Analysis
 - Bug Fixes
- Storage Systems
 - Provide the controller serial number with call out reports and EVA CV v7
 - Provide controller type (CR2) with controller reports w/ XCS v6.100 and newer
 - Implement fixes to verify minimum number of reports when pulling drive, rebooting, power up etc.
 - Provide a decoded ASCII text for severity. Instead of a number the report will indicate the severity e.g. critical, major etc.
 - All rules will use SNMP Type 3 trap design
 - Add Sense Key for ASC/ASCQ codes
 - Report old events. This is the algorithm that will detect when CV duplicates old log entries into the NT application log

Miscellaneous

- Java JRE 1.5 Updates
 - Support for new Daylight Saving Time rules
 - Java Security Fixes

1.3 Hardware Requirements

WEBES can be installed on the following hardware platforms. Do not confuse the supported hardware with the products that SEA can analyze, listed in the *WEBES Release Notes*.

- 32-bit Intel® based systems manufactured by HP, such as the ProLiant or the HP OpenView Storage Management Appliance

Note that WEBES usually will operate on any industry standard, 32-bit Intel-based system. However, because HP does not qualify WEBES on third-party products, functionality on such systems is provided on an as-is basis only.

- HP Integrity systems, built on the 64-bit Intel Itanium platform

Note that WEBES may operate on other non-HP Itanium-based systems. However, because HP does not qualify WEBES on third-party products, functionality on such systems is provided on an as-is basis only.

- HP AlphaServer systems
- HP 9000 series systems

Note

HP ProLiant systems based on the x64 architecture, which includes both the 64-bit Intel® EM64T-based Xeon systems as well as the AMD systems based on the AMD64 Opteron, Athlon, and Turion 64-bit chipsets.
Note that WEBES usually will operate on any industry standard x64 system. However, because HP does not qualify WEBES on third-party products, functionality on such systems is provided on an as-is basis only.

See the *WEBES Release Notes (section General WEBES Issues)* for related error messages if you install WEBES on non-supported platforms.

See the specific operating system chapters for more information about platforms.

See the next section " [1.4 Operating Systems Requirements](#)" for the operating systems that WEBES can be installed upon. Although WEBES can be installed on any of these hardware and operating system combinations, SEA only supports event bit-to-text translation and event analysis on a certain set of HP products.

See the *WEBES User Guide* or *WEBES Release Notes* for the list of products that SEA supports.

1.4 Operating Systems Requirements

WEBES supports systems running the following operating systems:

- Microsoft® Windows
 - Windows 2000 (any edition except Datacenter Server)
 - Windows Server 2003, with either Service Pack 1 or R2
 - 32 bit: Web Edition, Standard Edition and Enterprise Edition
 - Standard x64 Edition and Enterprise x64 Editions
 - Enterprise Edition and Datacenter Edition for 64 bit Itanium based Systems
 - Windows Storage Server 2003
 - Windows XP Professional
 - 32 bit Edition
 - x64 Edition
 - HP OpenVMS Itanium (Integrity) versions 8.2-1 or higher
 - HP OpenVMS Alpha versions 7.3-2, 8.2-1 or higher
- WEBES 4.5 and above require ODS-5 supported disk when installed on VMS

Note

WEBES v4.5 and above will require an ODS-5 disk to install itself onto, regardless of the version of VMS you are running on, regardless of Itanium or Alpha. VMS has several types of hard drive formats, ODS-2 (the old standard) and a newer type ODS-5 that supports more complex filenames (and other features). Because WEBES v4.5.1 includes and uses the Java Runtime Environment version 1.5, and the JRE requires ODS-5 to run, WEBES v4.5.1 requires ODS-5.

You can install and run WEBES on HP-UX and Linux, but currently it does not analyze *native* error logs for events occurring on those platforms.

You can, however, copy an error log from another system (Windows or OpenVMS) to an HP-UX or Linux system for manual analysis there.

- HP-UX PA-RISC version 11.11 or higher
- HP-UX Integrity Server version 11.23
- Red Hat Enterprise Linux Application Server 3.0 and 4.0
- Red Hat Enterprise Linux Enterprise Server 3.0 and 4.0

See the previous section " [1.3 Hardware Requirements](#)" for the types of hardware that WEBES can be installed upon. Although WEBES can be installed on any of these hardware and operating system combinations, SEA only supports event bit-to-text translation and event analysis on a certain set of HP product.

This version of WEBES is NOT supported on the following versions of Windows:

- Windows XP Professional 64 bit Itanium Edition
Although WEBES is not yet supported on this operating system, the Itanium kit may install and operate correctly but the Pentium kit can not be installed.
- Windows Vista, 32-bit Beta Edition (formerly known as "Longhorn")

See the *WEBES User Guide* or *WEBES Release Notes* for the list of products that SEA supports.

1.4.1 Operating System Upgrades to Support Daylight Saving Time Rule Changes

Although WEBES v4.5.1 includes the latest Java updates available at the time of its release to support the new rules defined for changes to Daylight Saving Time definitions in various countries that go into effect in 2007, certain operating system patches are also required to fully implement the changes.

Refer to the following HP Web page for details:

<http://h10072.www1.hp.com/dst>

You can find the same Web page by going to:

<http://search.hp.com>

Enter the search phrase "Daylight Saving Time" (not Savings but Saving).

1.5 Installation Kits

The WEBES master installation program installs the WEBES common components ([WCC](#)) and any or all of the two component tools: SEA and CCAT. For proper WEBES installation, always run the master kit program as described in this manual, even if you only want to install one component tool.

Kits for WEBES are available at the HP Service Tools website:

<http://www.hp.com/services/webes>

General Information

1.6 Upgrades

1.6 Upgrades

Upgrades can incorporate anything from a major WEBES release down to a minor kit with only rule updates or small functional improvements. Upgrades install without first uninstalling WEBES yourself. Be sure to check the websites for the latest upgrades to your WEBES version.

Upgrades for WEBES are available at the HP Service Tools website:

<http://www.hp.com/services/webes>

1.7 This Document

The *Installation Guide* is divided into the following sections:

- [General Information](#)
- [Installing on Windows](#)
- [Installing on HP-UX](#)
- [Installing on Linux](#)
- [Installing on OpenVMS](#)
- [Glossary](#)

1.8 Further Information

For additional information of WEBES, see the following:

The HP Service Tools website:

<http://www.hp.com/services/webes>

For additional documentation, see these related publications:

- *WEBES Release Notes*
- *WEBES User Guide*

Installing on Windows

This chapter describes how to install the WEBES suite of tools on Windows 2000, Windows 2003 and XP. Note that this also includes the HP OpenView Storage Management Appliance.

Pre-Installation	page 2-2
Installing WEBES	page 2-14
Post-Installation	page 2-23
Upgrading WEBES	page 2-30
Uninstalling WEBES	page 2-31

Installing on Windows

2.1 Pre-Installation

2.1 Pre-Installation

Follow these pre-installation guidelines. Depending on which WEBES components you wish to install, ensure that your system meets the requirements described in the appropriate sections:

- [2.1.1 WEBES Common System Requirements](#)
- [2.1.2 SEA System Requirements](#)
- [2.1.3 CCAT System Requirements](#)

Also, see the following additional pre-installation guidelines:

- [2.1.4 RCM Transition](#)
- [2.1.5 Permissions](#)
- [2.1.6 Archiving and Cleaning the Windows Event Log](#)
- [2.1.7 Installing on Terminal Servers](#)
- [2.1.8 Installing on a Storage Management Appliance](#)
- [2.1.9 Installing on an Enterprise Virtual Array \(EVA\) System](#)
- [2.1.10 Pre-Installation Requisites for Integrity Automatic Analysis for WEBES V4.5.1](#)

2.1.1 WEBES Common System Requirements

The system must meet the following basic requirements before you install WEBES:

- Processor architecture—HP 32-bit Intel® systems, HP x64 Intel EM64T or AMD64 systems, or HP Integrity systems which are based on the 64-bit Intel® Itanium® processor.

Non-HP Systems: WEBES is a proprietary service tool and is not a fully qualified off-the-shelf product such as Norton SystemWorks. As such, only platforms manufactured by HP, such as the ProLiant, are officially supported.

Engineering normally expects that WEBES will operate correctly on any industry standard system based on the Intel x86, EM64T, or Itanium architecture or an AMD architecture. However, because HP does not qualify WEBES on third-party products, functionality on such systems is provided on an as-is basis only.

- Operating system—Refer to section [1.4Operating Systems Requirements](#).
- Service Packs—HP supports the two most recent SPs for Windows 2000, Windows Server 2003 or XP. For Windows Server 2003, Service Pack 1 and R2 are supported.
- Disk space—A total of 353 MB must be available at install time, as follows:
 - 64 MB in a local directory to store the kit itself

Installing on Windows

2.1 Pre-Installation

- 64 MB in the %TEMP% directory (typically %SystemDrive%\Documents and Settings\{username}\Local Settings\Temp, where %SystemDrive% is C: by default). These files are removed after installation completes.
- 125 MB on the drive where the Windows operating system is installed (%SystemDrive%, typically C: by default)
- 100 MB on the drive where you will install WEBES (%SystemDrive%\Program Files\HP\svctools by default)

A total of 289 MB are used after installation completes, assuming all components are installed.

- Local kit copy required—Copy the WEBES kit to a local drive. The installation results in an error when mapping a drive letter to another system where the kit resides, for example:

```
Internal Error 2755. 3,  
F:\path to\WEBESV431BL322KIT2_Jan-28-2004_Windows.MSI
```

- Virtual memory—400 MB of virtual memory is recommended.

During standard operation, SEA uses far less memory. For example, when the Director is idle, usage stays generally around 13 MB for systems with all the WEBES tools installed.

The Director only approaches the maximum value when a high volume of events arrive or an extremely large log file is processed. Even then, the memory usage may remain significantly below the maximum value. The virtual memory requirement is intended to set a threshold for the absolute maximum amount of memory that will ever be needed. If the threshold is exceeded, the Director terminates with out-of-memory error.

Virtual memory for a process is stored in RAM and the pagefile on your disk. The space allocated must be sufficient to run WEBES and all other applications that you want to run simultaneously.

If the virtual memory requirement given here is too large or too small for your environment, you are free to make adjustments. You may want to experiment with various settings to find the optimal value. Refer to the *WEBES User Guide* for more information on adjusting the memory settings.

- TCP/IP services must be installed and running.
- Java Virtual Machine for Internet Explorer—On 32-bit and x64 editions of Windows XP and Server 2003, Microsoft no longer supplies a Java plug-in with the Internet Explorer Web browser. If you wish to use the 32-bit Internet Explorer to connect to the SEA Web interface (the 64-bit IE on x64 will not work with SEA), then you must download and install a Sun JRE instead, which includes Web browser Java plug-ins. You can obtain it from this Web site:

<http://java.sun.com/getjava>

The 64-bit Internet Explorer on x64 and Itanium editions of Windows will not work with the SEA Web interface, with any Java plug-in.

Installing on Windows

2.1 Pre-Installation

On Itanium editions of Windows XP and Server 2003, Sun does not provide a JRE. The only Java plug-in available as of this writing for Windows on Itanium is the Microsoft Java VM (MSJVM), which is no longer supported nor available for public download. It can be used without Microsoft's support, however. Therefore, WEBES v5.0 and later for Windows Itanium includes the MSJVM which users can install after completing the WEBES kit installation. For details from Microsoft, see:

<http://www.microsoft.com/mscorp/java/>

After WEBES has been installed on Windows Itanium, the MSJVM can be found at:

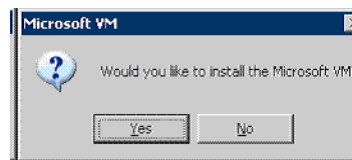
```
{installed directory}\svctools\common\share\msjavx86.exe
```

(file version 5.0.3805.0)

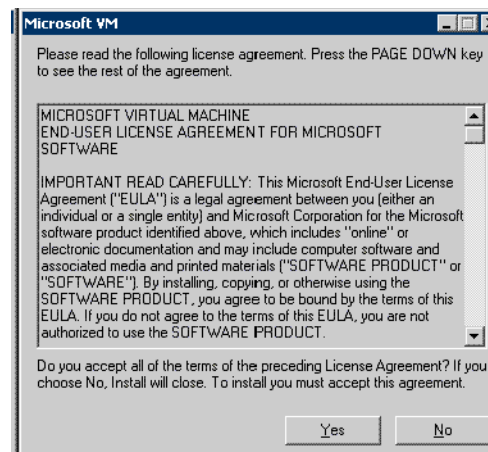
The {installed directory} is the location where the user chose to install WEBES. By default, this location is:

```
%SystemDrive%\Program Files\Hewlett-Packard
```

The MSJVM can be installed by executing the msjavx86.exe file, for example by double-clicking it in Windows Explorer. The following screen will be shown:



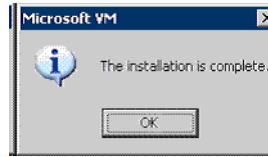
Click Yes. The following screen is shown.



Click Yes. The following screen is shown.

Installing on Windows

2.1 Pre-Installation



Click OK to complete the installation.

To verify that the Microsoft Java plug-in to the 32-bit version of Internet Explorer has been installed, launch Internet Explorer (32-bit).

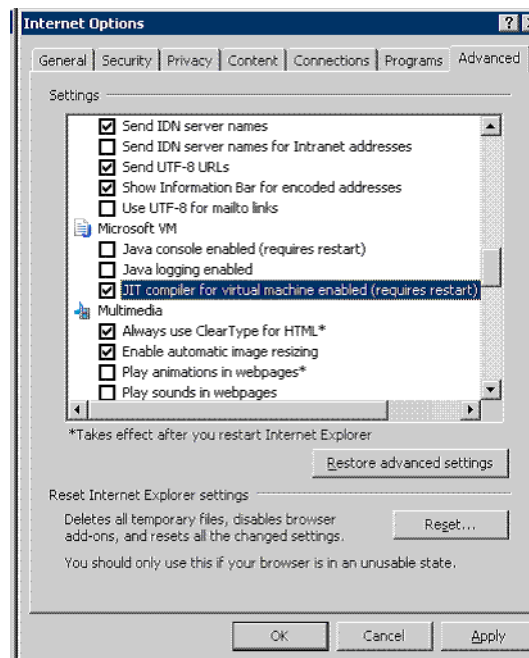
Note the 32-bit IE is installed here:

```
%SystemDrive%\Program Files (x86)\Internet Explorer\IEXPLORE.EXE
```

The 64-bit IE which will NOT work with the SEA Web interface is here:

```
%SystemDrive%\Program Files\Internet Explorer\IEXPLORE.EXE
```

In IE, click the Tools button, then click Internet Options, then click the Advanced tab. Scroll down to verify that "Microsoft VM" is listed:



The checkmarks are up to user preference. Suggestions are shown above. The JIT compiler will increase overall SEA Web interface performance at the expense of some startup delay.

Installing on Windows

2.1 Pre-Installation

- Windows Installer 2.0 or higher is required.

If the required version is NOT found installed, the following message appears:

"You must upgrade this system to Windows Installer version 2.00 or higher before installing WEBES. Windows Installer is available as a free download from <http://www.microsoft.com>".

You can check the Windows Installer version by entering **msiexec** at the command prompt. (Ignore the message about incorrect command line parameters.) Note that Windows Installer 2.0 is bundled with Windows XP and Windows 2000 SP3.

- Automated Notification—If desired, you can choose a method for sending automatic problem reports to your service provider:
 - ISEE—For Instant Support Enterprise Edition (ISEE) automatic reports, you must install ISEE Client A.03.95 or later on the same machine as WEBES.
- You can upgrade to this version without first uninstalling a previous version, if the previous version is within two releases of this version. This kit recognizes an existing installation, saves configuration and state data, uninstalls the existing kit, installs this version, and then restores the configuration and state data.

To install this version on a system that was running a version older than two releases ago, first, uninstall the older version using the instructions in the *WEBES Installation Guide* for that version.

2.1.2 SEA System Requirements

In addition to the common WEBES prerequisites, your system must meet the following requirements before you install the SEA component:

- Minimum 31 MB free disk space
- You must enter the model and serial number of the server during the HP ISEE Client installation. This is for entitlement purposes, even though successful entitlement of the server is not necessary to enable the separately entitled storage support.
- Web browser—Table 2-1 describes the browser prerequisites for SEA according to the following categories:
 - Supported—fully tested
 - As-is—not officially tested but may work reasonably well
 - Unsupported—known not to work

Table 2–1 Windows Browser Requirements

Category	Browser
Supported	Internet Explorer 6.0 (32 bit version only) Internet Explorer 7.0 (32 bit version only) Netscape 7.x Mozilla 1.3 or later Firefox 1.0 or later
As-Is	Internet Explorer 5.5 Mozilla earlier than 1.3
Unsupported	Internet Explorer (any 64-bit edition) Internet Explorer earlier than 5.5 Netscape earlier than 7.0 Firefox earlier than 1.0

Web browsers can use different Java runtime environments, but the SEA web interface requires certain versions of Java for each web browser.

- Internet Explorer—Either the Microsoft Java VM version 1.1.4, or a Sun JRE version 1.2 or higher.
Internet Explorer on Windows 2000 includes its own Java VM 1.1.4, but no Java is included in Internet Explorer on Windows XP, and Microsoft no longer supplies a Java VM. You must download and install a Sun JRE instead.

On Itanium editions of Windows XP and Server 2003, Sun does not provide a JRE. Contact HP WEBES support to obtain a Microsoft JVM for use in the 32-bit version of Internet Explorer on Itanium editions of Windows. The 64-bit IE on Itanium will not work with SEA.

- Netscape—Either the Netscape Java VM which is always included with Netscape, or a Sun JRE version 1.2 or higher.
- Mozilla and Firefox—Sun JRE version 1.3.1 or higher.
Mozilla and Firefox do not include any Java VM. You must download and install a Sun JRE. You can check the version by selecting Tools | Web Development | Java Console. The Java version is given on the first line of the Java Console window.

Sun Java is available at:

<http://java.sun.com/getjava>

Install any desired web browsers before installing the Sun JRE. The JRE installation then finds and updates installed web browsers so that they use the Sun JRE.

Installing on Windows

2.1 Pre-Installation

- Windows Event Log—After installation, SEA begins analyzing all events currently stored in one of the Windows event logs. On x86 (Pentium) and x64 systems, SEA analyzes only the Application event log. On Integrity systems, SEA analyzes only the System event log. This initial analysis can result in high CPU usage over an extended period. To control this operation, you have two options:
 - Archive and clean the event log as described in Section 2.1.6 before installing. This reduces the size of the log and, in turn, the cost of the initial scan.
 - Choose to delay the initial scan when prompted during installation. Be aware that SEA automatic analysis does not run until after (and starting with) the initial scan, however.
- On Internet Explorer, make sure that HTTP 1.1 settings are enabled. Choose Tools | Internet Options | Advanced from the pull-down menus. Check both of the following under HTTP 1.1 Settings:
 - Use HTTP 1.1
 - Use HTTP 1.1 through proxy connection

2.1.3 CCAT System Requirements

In addition to the common WEBES prerequisites, your system must meet the following requirements before you install the CCAT component:

- Minimum 3 MB free disk space
- Tru64UNIX and OpenVMS may be analyzed from a Windows installation of CCAT, but only if a technician's kit is subsequently installed.

2.1.4 RCM Transition

RCM is no longer a WEBES component as of version 4.2. Be aware of the following installation considerations if you are using RCM at WEBES install time:

- RCM component of WEBES—You must uninstall all of the WEBES version that contained RCM before installing this version, and doing so removes the RCM tool.

You are free to install a standalone RCM kit at any time after removing the old version of WEBES. This version of WEBES does not contain RCM, but the latest RCM kits and documentation may be downloaded from the following location:

<http://www.software.hp.com/portal/swdepot/displayProductInfo.do?productNumber=RCMBASE01>

- Standalone RCM—Standalone versions of RCM are not affected by installing or upgrading to this version of WEBES.

2.1.5 Permissions

In order to install, remove, or update WEBES your user ID must be one of the following:

- A member of the Administrators group on the machine
- A member of a group that is a member of the Administrators group on the machine. For example, if your user ID is a Domain Admin, and you have added Domain Admins to the Administrators group on the local machine, then you have the necessary permissions.

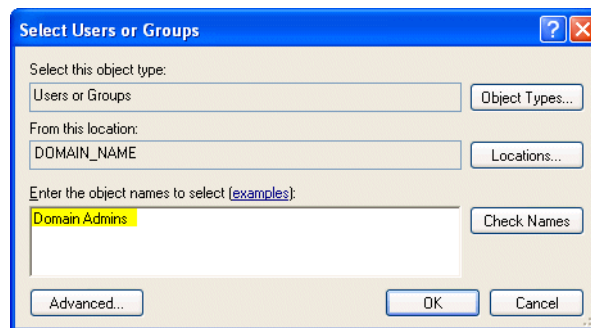
To add Domain Administrators to the local Administrator Group, use the procedure for your operating system.

Windows 2000: From a login account with administrator privileges, locate the user management function under My Computer | Manage | Computer Management (Local) | System Tools | Local Users and Groups | Groups. Double click the Administrators Group, and press the Add button. Highlight Domain Admins and press Add.

Windows Server 2003: From a login account with administrator privileges, locate the user management function under My Computer | Manage | Computer Management (Local) | System Tools | Local Users and Groups | Groups. Double click the Administrators Group, and press the Add button. Highlight Domain Admins and press Add.

Windows XP: From a login account with administrator privileges, locate the user management function under Start | Control Panel | User Accounts. Choose the Advanced tab, and press the Advanced button. Choose Local Users and Groups | Groups. Double click the Administrators Group, and press the Add button. Type “Domain Admins” and press OK (see Figure 2–1).

Figure 2–1 Adding Domain Admins



2.1.6 Archiving and Cleaning the Windows Event Log

(Required only when installing the SEA component)

Installing on Windows

2.1 Pre-Installation

Follow these steps to archive and clean the appropriate Windows event log. If WEBES is installed and running when you clean the log, stop the Director process before proceeding (see the *WEBES User Guide* for information on stopping the Director). Also, do not stop and restart any Windows system processes.

1. Open the event viewer.

Windows 2000—Start | Programs | Administrative Tools | Event Viewer

Windows Server 2003—Start | Programs | Administrative Tools | Event Viewer

Windows XP—Start | Control Panel | Performance and Maintenance | Administrative Tools | Event Viewer

2. For events analyzed by SEA, follow step (a) if you are installing on an x86 (Pentium) or x64 or step (b) if you are installing on an Integrity Server.
 - a. x86/x64—Clear the application event log:
Go to the Application Log. SEA does not process events from any other Windows event log.
Windows 2000—Click on Application Log in the left pane of the event viewer window.
Windows XP—Click on Application Log in the left pane of the event viewer window.
 - b. Integrity—Clear the system event log:
Go the System Log. SEA does not process events from any other Windows event log.
Windows 2003—Click on System Log in the left pane of the event viewer window.
3. Clear all events. Note that you are given the option to save the existing events to another file before clearing. (Saved logs can be analyzed at a later time.)

Windows 2000—Choose Action | Clear all Events.
Windows XP—Choose Action | Clear all Events.
4. Close the event viewer.

If WEBES was installed when you cleaned the log and you stopped the Director, you can now restart it using the procedure described in the *WEBES User Guide*.

2.1.7 Installing on Terminal Servers

Terminal Server WEBES installation guidelines apply to these operating systems:

- Windows 2000 Server and Advanced Server, when Terminal Services are enabled
- Windows Server 2003 when Remote Desktop connections are enabled
- Windows XP when Remote Desktop connections are enabled

From Console—Terminal Server system installations should be performed from the Terminal Server console by an administrator (either the Administrator account or any account in the Administrators group).

For the best results, make sure that no clients are logged on to the server during WEBES installation. You can send clients a message about the time and duration of the installation and then disable all connections before starting.

Otherwise, the process for installing is the same as any other Windows WEBES installation.

From Client—Install from a Terminal Services client (renamed to Remote Desktop in Windows XP) as follows:

1. Log on to the Terminal server as an administrator and close all applications.
2. Copy the WEBES kit to a local drive on the Terminal server.
3. Install the program on a local NTFS formatted drive as with any other Windows WEBES installation.
4. On the Terminal server, open and close the system PATH environment variable. Opening and closing sets the PATH so that commands such as `desta` or `wsea` can work without specifying the full `\svctools\common\bin` path to the command.

Open Start | Settings | Control Panel | System. Click the Advanced tab. In Environment Variables, open the PATH entry (under System Variables) for editing.

Do not make any changes; just click OK several times to get out of the System utility. The PATH is now set for any command prompt windows opened after performing this workaround.

2.1.8 Installing on a Storage Management Appliance

For purposes of WEBES, the HP OpenView Storage Management Appliance (SMA) is considered a Windows 2000 system. However, the SMA is a “headless” Integrity Server, meaning it is designed to be configured and allowed to run with minimal direct user interaction—without a physical monitor, keyboard, or mouse attached.

You can connect to the Windows 2000 desktop on the SMA using two methods:

- By directly connecting a monitor, keyboard, and mouse
- By running the Microsoft Terminal Services client (renamed to Remote Desktop in Windows XP)

Every SMA is preconfigured to accept Terminal Services client connections because the Terminal Services server is preinstalled. Users who do not already have a copy of the Terminal Services client can download it from the following URL:

<http://www.microsoft.com/downloads/details.aspx?FamilyID=33AD53D8-9ABC-4E15-A78F-EB2AABAD74B5&displaylang=en>

Installing on Windows

2.1 Pre-Installation

See Section 2.1.7, [Installing on Terminal Servers](#), for more information.

Desktop connections also require the account username and password for the SMA. The factory-set defaults are username **administrator** and password **admin#####**, where ##### is the last six characters of the serial number in reverse order. The password is case sensitive, and you are advised to change it (if you have not already done so) for better system security.

2.1.9 Installing on an Enterprise Virtual Array (EVA) System

WEBES v4.5.1 and later requires CommandView EVA (CV EVA) v3.2 to be installed on systems that manage HP StorageWorks Enterprise Virtual Arrays (EVAs). In addition, WEBES v4.5.1 now supports the gathering of status and error data from the fiber ports associated with EVA storage subsystems. For this feature to work correctly CV EVA v4.1 is required. If you connect to CV EVA of a version earlier than v4.1, WEBES will work but it will not collect fiber port status data. Regardless of this new feature, WEBES recommends installing the latest version of CV EVA to take advantage of the latest improvements and features in CV EVA.

2.1.9.1 Installation Prompts When File Fails to Delete

In certain cases, particularly on SMA systems, certain WEBES files can be locked by Windows, even though no more WEBES processes are running. In that case, the WEBES uninstaller will not be able to delete these WEBES files within the svctools directory tree and thus will not be able to install new files of the same names. The problem can affect any version of WEBES, because the Windows Management Instrumentation (WMI) service operates this way by Windows design. WEBES development feels that it is unwise to summarily stop the WMI service in order to delete these files, because the WMI service may be performing other tasks for Windows or other applications at the time. Therefore, if such a lock exists, WEBES v4.5.1 and later installers will detect the situation and prompt the user with a popup window containing text similar to the following:

WEBES setup failed to delete the above file. It may be open and thus locked, by the "Windows Management Instrumentation" service or some other process. Please follow these steps:

1. Close any applications that may have WEBES files open, including OSEM, ISEE Client, and file editors such as Notepad.

2. Stop the Windows Management Instrumentation (WMI) service, either via the Start...Control Panel...Administrative Tools...Services utility, or by issuing the following command in a Command Prompt window:
`net stop winmgmt`

If the system prompts you about dependent services, allow it to stop those services too.

3. Close the Services utility window that you may have opened above.

4. Delete the above file yourself manually.

5. Click the Yes button below.

After WEBES setup completes, you can restart the WMI service (if it was running) and any dependent services that were running.

Have you performed the above steps and are you ready to continue with the installation now?

(Answering No will abort the WEBES setup program)

[Yes] [No]

After you stop the service and any other applications that have the WEBES files open, and delete the offending WEBES file shown in the popup window, you can answer Yes to the popup window prompt, and the WEBES installation should continue successfully. After the install completes, you can restart the WMI service, if you stopped it earlier, by either:

- a. Go to Control Panel...Administrative Tools...Services. Start the "Windows Management Instrumentation" (WMI) service, if it is running. Or:
- b. Issue the command "net start winmgmt" from a Command Prompt window.

2.1.10 Pre-Installation Requisites for Integrity Automatic Analysis for WEBES V4.5.1

The following are the pre-installation requisites for Windows Integrity systems:

Windows Integrity systems support Microsoft® Windows 2003, Windows Server 2003 Enterprise Edition, Windows Datacenter, Linux, HP OpenVMS, and HP-UX. However, WEBES is not supported on Linux on Integrity systems.

1. Windows 2003 or Windows 2003 SP1

Strongly Recommended requirements:

1. Up-to-date Windows Update
2. Smart Setup Agents V4.0 (Minimum Agents version is V3.1) V4.0 is the minimum version that logs the Windows system event log entries with the appropriate binary data to be processed by SEA. The current version is v4.6, obtainable here:

<http://h20000.www2.hp.com/bizsupport/TechSupport/SoftwareDescription.jsp?lang=en&cc=us&prodTypeId=15351&prodSeriesId=1844071&prodNameId=1844072&swEnvOID=1060&swLang=13&mode=2&taskId=135&swItem=is-33352-6>

3. You may need the following Microsoft Hotfix to prevent Windows event log corruption:
<http://support.microsoft.com/?kbid=899416>

2.2 Installing WEBES

The procedures in this section apply when WEBES is already uninstalled or was never installed at all. If you are upgrading to this version of WEBES with a version within two releases ago already installed, see Section [2.4, Upgrading WEBES](#). Upgrading lets you preserve your configuration and state data.

Note

If you have installed any pre-release build of any version of WEBES, and you wish to replace it with the official final kit build of the same version, you must uninstall the existing WEBES installation before installing the final kit. Do not attempt to install the later kit without first uninstalling the earlier kit. Upgrades from one WEBES version to another version within two version numbers are supported, but you cannot upgrade from one build to another build of the same WEBES version.

Do not save configuration data if you are going back to an earlier WEBES version, for example 5.0 to 4.5.1. The stored configuration data may not be compatible with an earlier version.

After all [Pre-Installation](#) requirements are met, follow these steps to install WEBES.

1. If you have not already done so, log on using an account with administrator privileges.
2. Locate and run the WEBES kit executable file, which ends in the .EXE extension.

Note:

The Windows WEBES kit identified by the words “Pentium” or “x86” can be installed on any supported 32-bit edition or x64 edition of Windows, but not an Itanium edition of Windows. The Windows kit identified by the word “Itanium” can be installed on any supported 64-bit Itanium edition of Windows, but not any 32-bit or x64 edition of Windows. See section [1.4 Operating Systems Requirements](#) for the list of Windows editions supported by WEBES.

3. Follow the instructions on screen.

Note: Do not select the root directory of any drive (such as “D:\”) as your WEBES installation directory. Doing so may cause a later WEBES upgrade to a newer version to fail. This problem will be fixed in a future release.

Certain pop-up dialog windows that prompt for user information may not appear in front of other existing windows. This may give the appearance that the WEBES installation has hung. If you encounter this, look for a new window entry in the Windows Task Bar and click on it to bring it in front of other windows so you can enter the information and continue the WEBES installation. This problem will be fixed in a future release.

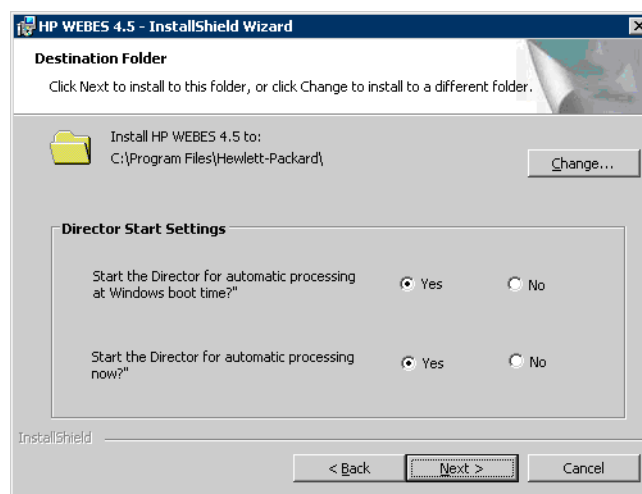
If you have previously removed WEBES, but kept your configuration information, then choose the same WEBES components (SEA and/or CCAT) you had in the previous installation of WEBES, and install it to the same directory it was located in before. Otherwise, the saved configuration data will not be valid and WEBES may fail. This problem will be fixed in a future release.

Do not save configuration data if you are going back to an earlier WEBES version, for example 5.0 to 4.5.1. The stored configuration data may not be compatible with an earlier version.

Upgrading—If a WEBES version within two releases ago is present, the kit informs you that the other version was detected and prompts you about upgrading. See [Section 2.4 Upgrading WEBES](#) for details.

Tool Selection—The install kit lets you select the WEBES tools that you want to install (see [Figure 2–2](#)).

Figure 2–2 Sample WEBES Tool Selection (Destination Folder)



“Start the Director for automatic processing at Windows boot time?”

Installing on Windows

2.2 Installing WEBES

Yes: When the Windows operating system starts, the WEBES Director process will be started as a system service, even if no user(s) logs in. The process will continue to run until the system is shut down, or a user stops the Director.

No: When the Windows operating system starts, the WEBES Director process will not be started until a user starts it, either using the Start... menu or by issuing the command “`net start desta_service`”. The process will continue to run until the system is shut down, or a user stops the Director.

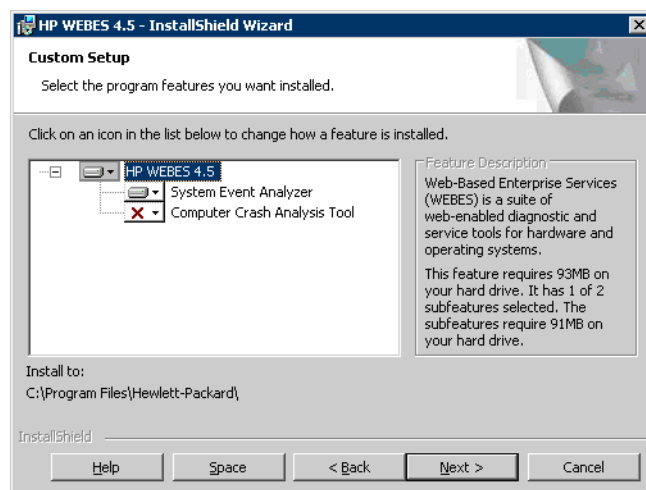
When the Director is running, it performs automatic processing upon receiving any new analyzable input data.

“Start the Director for automatic processing now?”

Yes: At the completion of the WEBES installation, the WEBES Director process will be started. The process will continue to run until the system is shut down, or a user stops the Director.

No: The WEBES Director process will not be started until the user starts it either using the Start... menu or by issuing the command “`net start desta_service`”. However, if the Windows system is shut down and restarted, then the Director will be started by Windows if the “Start....at boot time” option is “yes”.

Figure 2–3 Sample WEBES Tool Selection (Custom Setup)



The disk icon signifies that the component will be installed onto disk. The red X icon signifies that it will not be installed. By default, the Computer Crash Analysis Tool (CCAT) is not selected, since CCAT does not analyze Windows crashes.

Configuration Wizard—The install kit launches a series of windows that ask for data needed by WEBES. See figures 2–4, 2–5, 2–6, 2–7, 2–8, and 2–9. The windows ask some or all of the questions in Table 2–2, depending on what tools you selected.

Figure 2–4 Configuration Wizard - User Information

The screenshot shows the 'User Information' step of the HP WEBES 4.5 - InstallShield Wizard. The window title is 'HP WEBES 4.5 - InstallShield Wizard'. The subtitle is 'User Information' with the instruction 'Please enter User Information to configure WEBES'. The form contains the following fields:

Field	Value
User Name	Chris Green
Company Name	XYZ Company
Phone Number	123-456-7890
Email	chris.green@xyzcon
SMTP Mail Server	mailsys.xyzcompany
System Serial Number	A01234567890

At the bottom, there are three buttons: '< Back', 'Next >', and 'Cancel'. The 'Next >' button is highlighted.

Figure 2–5 Configuration Wizard - SMTP Notification Setup for SEA

The screenshot shows the 'System Event Analyzer Configuration Information' step of the HP WEBES 4.5 - InstallShield Wizard. The window title is 'HP WEBES 4.5 - InstallShield Wizard'. The subtitle is 'System Event Analyzer Configuration Information' with the instruction 'Configuring SEA'. The form contains the following fields:

SMTP Notification Setup for System Event Analyzer		
Server	mailsys.xyzcompany	
To	chris.green@xyzcon	From
		sea@server1.xyzcon

At the bottom, there are three buttons: '< Back', 'Next >', and 'Cancel'. The 'Next >' button is highlighted.

Figure 2-6 Configuration Wizard - SMTP Notification Setup for CCAT

HP WEBES 4.5 - InstallShield Wizard

CCAT Configuration Information

Configuring CCAT

SMTP Notification Setup for CCAT

Server: malsys.xyzcompany

To: chris.green@xyzcon

From: ccat@server1.xyzcc

InstallShield

< Back Next > Cancel

Figure 2-7 Configuration Wizard - Profile and Notification Details

HP WEBES 4.5 - InstallShield Wizard

Profile and Notification Information

Please enter Profile and Notification details

Customer: XYZ Company

Address, City, State, Country, Postal Code.: 123 Main St., Metro

Primary Contact: Chris Green

Secondary Contact: Pat Brown

Phone Number: 123-456-7890

Special Instructions: Check with customer

InstallShield

< Back Next > Cancel

Figure 2–8 Configuration Wizard - Configure WEBES

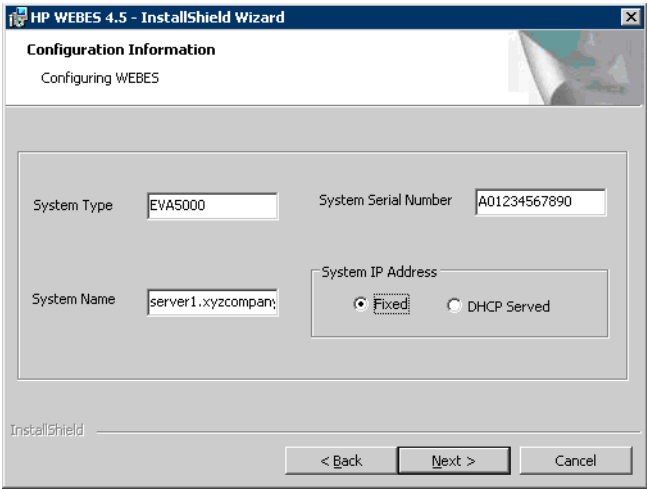


Figure 2–9 Command Prompt - WEBES Service Obligation Validation

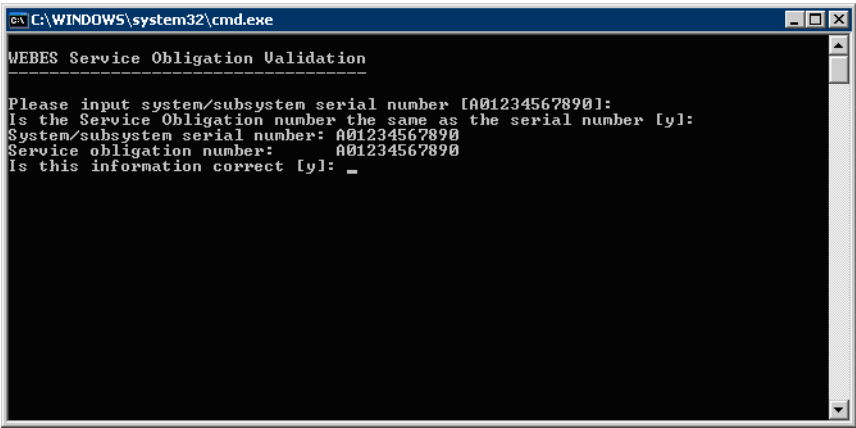


Table 2–2 WEBES Information Required During Installation

Question	Example	Notes
User Information		
User Name	Chris Green	The primary user of WEBES on this sytem, or the person that HP support should contact regarding issues reported by WEBES.
Company Name	XYZ Company	The company employing the primary WEBES user.

Installing on Windows

2.2 Installing WEBES

Table 2–2 WEBES Information Required During Installation (continued)

Question	Example	Notes
Phone Number	123-456-7890	The telephone voice contact number for the primary WEBES user.
Email	chris.green@xyzcompany.com	The email address of the primary WEBES user.
SMTP Mail Server	mailsys.xyzcompany.com	The server that handles SMTP email at your site.
System Serial Number	A01234567890	The serial number of the system upon which WEBES is being installed.
System Event Analyzer Configuration Information		
SMTP Notification Setup for System Event Analyzer:		
Server	mailsys.xyzcompany.com	The server that handles SMTP email at your site. By default, the SMTP Mail Server is entered in the User Information window.
To	chris.green@xyzcompany.com	SEA notification messages will be sent to this email address.
From	sea@server1.xyzcompany.com	Emails sent by WEBES SEA processes will have the From address set to this email address. Be sure your SMTP email server will accept this address and send the email without rejecting it.
Computer Crash Analysis Tool (CCAT) Configuration Information		
SMTP Notification Setup for CCAT:		
Server	mailsys.xyzcompany.com	The server that handles SMTP email at your site. By default, the SMTP Mail Server is entered in the User Information window.
To	chris.green@xyzcompany.com	CCAT notification messages will be sent to this email address.
From	ccat@server1.xyzcompany.com	Emails sent by WEBES CCAT processes will have the From address set to this email address. Be sure your SMTP email server will accept this address and send the email without rejecting it.
Profile and Notification Information		
The following information will be sent in WEBES problem report notifications.		

Installing on Windows

2.2 Installing WEBES

Table 2–2 WEBES Information Required During Installation (continued)

Question	Example	Notes
Customer	XYZ Company	The company using WEBES as a customer of HP. By default, the Company name entered is entered in the User Information window.
Address, City, ...	123, Main Street, Metropolis, VA 22222	The address of the primary WEBES user, or of the company site.
Primary Contact	Chris Green	The primary contact person at the customer company's site for the system running WEBES. By default, the User Name is entered in the User Information window.
Secondary Contact	Pat Brown	The person to contact at the customer company's site, if the Primary Contact person is unavailable.
Phone Number	123-456-7890	The telephone voice contact number for the primary contact. By default, the Phone Number is entered in the User Information window.
Special Instructions	"Check with customer prior to dispatching services. Prior notification to security is necessary for service access to site."	Add details that will be useful to your service provider.
Configuration Information:		
The following information will be sent in WEBES problem report notifications.		
System Type	EVA5000	The product description, product number, or model number of the system hardware unit on which WEBES will be installed.
System Serial Number	A01234567890	The serial number of the system hardware unit.
System name	server1.xyzcompany.com	The TCP/IP hostname and fully qualified domain name of the system on which WEBES will be installed. If the system has no hostname, the dotted decimal IP address may be entered.
System IP Address	Fixed or DHCP Server	Select Fixed for static IP addresses, or DHCP Served if the IP address of the system is assigned when the system connects to a DHCP server, usually on startup.

Installing on Windows

2.2 Installing WEBES

Table 2–2 WEBES Information Required During Installation (continued)

Question	Example	Notes
Service Obligation Validation:		
The following information will be sent in WEBES problem report notifications.		
System/Subsystem Serial Number	A01234567890	The serial number of the system hardware unit. By default, the System Serial Number is entered in the Configuration window.
Service Obligation Number	A01234567890	Normally, the same as the serial number. Contact your HP customer support representative to obtain your service obligation number as defined by your service contract.

For more details about the following information window presented during the install of the SEA component (if selected to be installed), see section [2.1.6 Archiving and Cleaning the Windows Event Log](#).

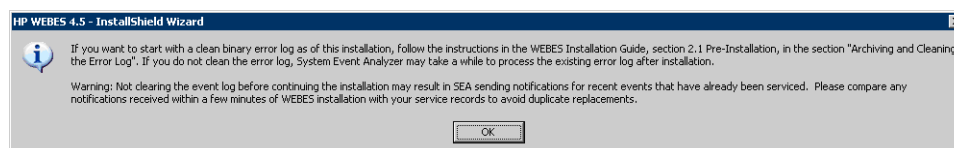
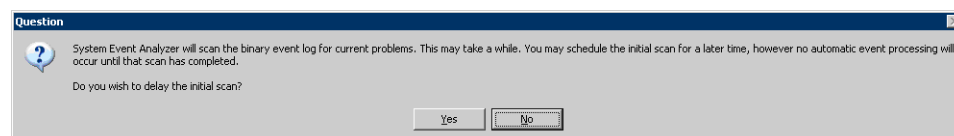


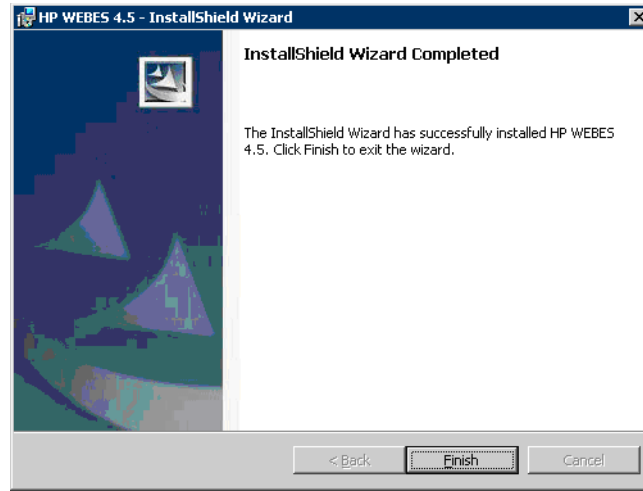
Figure 2–10 Delaying the Initial SEA Scan



Delaying the Initial SEA Scan—Immediately after installation, SEA normally scans all events currently stored in the error log. For a very full log, this initial scan can result in high CPU usage over an extended period. You can choose to delay the initial scan when prompted, but SEA automatic analysis does not run until after (and starting with) the initial scan. Note that events that happen during the delay are saved in the log for analysis at initial scan time.

Managed Entity Web Interface—You will know that the WEBES installation is completed when you see the following window:

Figure 2–11 WEBES Install Complete



When you click Finish, the window may not disappear for up to a minute (approx). WEBES is finishing installation tasks during this time and will close the window when the tasks are completed. Clicking Finish multiple times will have no further effect.

2.2.1 Installing WEBES on Incorrect Platforms

If you install the Windows Pentium/x86 kit on an Integrity (Itanium-based) system (see Section [1.4Operating Systems Requirements](#) for a list of supported platforms), it will prompt the following error message:

"This WEBES kit supports only 32 bit platforms. Please contact HP support for WEBES kit for your processor type."

If you install the Windows Itanium kit on a 32-bit or x64 system (see Section [1.4Operating Systems Requirements](#) for a list of supported platforms), it will prompt the following error message:

"This installation package is not supported by this processor type. Contact your product vendor." Therefore, please ensure that you obtain the right kit before installing WEBES.

2.3 Post-Installation

Be aware of the following post-installation procedures.

- [2.3.1 Adding a Tool](#)
- [2.3.2 Determining Which Tools are Installed](#)
- [2.3.3 Determining Which Versions are Installed](#)

Installing on Windows

2.3 Post-Installation

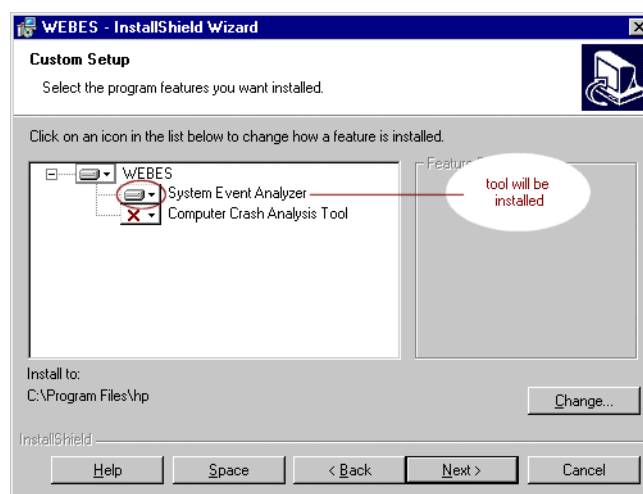
- [2.3.4 Storing User Files](#)
- [2.3.5 Disabling EVA SNMP Trap Notifications](#)
- [2.3.7 Adding an EVA After Installing WEBES](#)
- [2.3.8 Installing or Upgrading ISEE Client After Installing or Upgrading WEBES](#)
- [2.3.9 Configuring SNMP Traps to Send Notifications to HP-SIM](#)

2.3.1 Adding a Tool

Follow these steps to add a WEBES tool after initial installation:

1. If you have not already done so, log on using an account with administrator privileges.
2. Locate and run the WEBES kit file, which ends in the .MSI extension.
3. When prompted, choose the Modify option.
4. Change the selection button next to the tools that you want to add as shown in Figure 2-12.

Figure 2-12 Adding a WEBES Tool



5. Follow the prompts to proceed with installation. See Table 2-2 if you need help with installation questions.

2.3.2 Determining Which Tools are Installed

On any system that you are unsure about, you can determine what parts of WEBES are installed using the following procedure:

1. Start the Windows utility for adding and removing programs:

2000: Start | Settings | Control Panel | Add/Remove Programs
XP: Start | Control Panel | Add or Remove Programs

2. When installed, WEBES creates two entries:

HP WEBES
WCCProxy

WCCProxy is included with and required by WEBES. Never uninstall WCCProxy when the HP WEBES entry is present.

3. To determine which WEBES tools are installed, highlight the HP WEBES entry.
4. Press the Change/Remove button to run the setup wizard.
5. When prompted, choose the Modify option.
6. Look at the Custom Setup window to see which tools are installed.
7. Click the Cancel button to close the wizard without making any changes.

2.3.3 Determining Which Versions are Installed

To determine what versions of WEBES and its component tools are installed, open and read the text files shown in Table 2–3.

Table 2–3 Determining WEBES and Tool Versions

Tool	File for Version Information
WEBES Overall Kit	{WEBES install directory}\common\webes\release.txt
WEBES Common Components (WCC)	{WEBES install directory}\common\desta\release.txt
WCCProxy	{WEBES install directory}\common\wccproxy\release.txt
SEA	{WEBES install directory}\common\ca\release.txt
CCAT	{WEBES install directory}\common\ccat\release.txt

The default {WEBES install directory} is % SystemDrive%:\Program Files\Hewlett-Packard\svctools. If this is not where WEBES was installed, look for the path and file **common\webes\release.txt** on your system. The svctools directory containing this path is the {WEBES install directory}.

The files list the component versions for the release. Generally, they match the overall WEBES version number. The files in Table 2–3 also may reveal a “build” number, but those are not necessarily intended to match across components.

2.3.4 Storing User Files

WEBES includes “userdata” subdirectories under the WEBES svctools directory tree as follows:

```
svctools\common\ca\userdata
svctools\common\ccat\userdata
svctools\common\desta\userdata
svctools\common\webes\userdata

svctools\specific\ca\userdata
svctools\specific\ccat\userdata
svctools\specific\desta\userdata
svctools\specific\webes\userdata
```

When using WEBES, store your own files (such as binary event logs or CCAT crash dump files) under these subdirectories.

- Storing files under the userdata subdirectories makes them easily accessible in the WEBES user interfaces. For example, SEA automatically lists any binary event logs from the ca\userdata subdirectories under Other Logs.
- In WEBES 4.1 or later, files stored under the userdata subdirectories are preserved and restored during WEBES uninstallations and reinstallations. The files will be restored to right places the next time you install WEBES, even if you install it to a different location than before.

2.3.5 Disabling EVA SNMP Trap Notifications

This section applies when installing WEBES on the Storage Management Appliance, when Open Service Event Manager (OSEM) reporting is running.

SEA version 4.2 or higher can lead to duplicate OSEM problem reports from the Enterprise Virtual Array (EVA).

The traditional EVA reporting method uses SNMP traps to the OSEM host. Starting with WEBES 4.2, SEA detects the same events by reading the application event log on the Storage Management Appliance. Because SEA also notifies the OSEM host, problem report recipients see duplicate reports for each event: those originating from the SNMP traps, and those from the event log.

To prevent the duplicate reports, disable the traditional SNMP trap notifications by executing the file {WEBES install directory}\common\ca\crsm\disableRules.bat. The batch file copies a DisabledFilters.txt file to the root of the CRSM directory, which disables the SNMP trap notifications.

2.3.6 Completing EVA Managed Entity Data

In WEBES v4.4.4 and earlier releases, the user was prompted to enter EVA managed entity data if WEBES discovered Command View EVA (CV EVA) to be installed. As of v4.5, new features have been added that make this task more complex. To make the install process simpler, this user task of data validation and completion has been moved to be a post-install task.

2.3.6.1 Completing Data for Command View EVA Servers

If WEBES discovers during installation that CV EVA is installed, it will automatically create a WEBES Managed Entity for the system, of the type “Command View EVA Server.” It will fill in what information it can discover, but the user must complete the rest of the information.

For example, if the version of CV EVA is v6 or later, then the user must enter the username and password for CommandView EVA Authentication, which cannot be automatically discovered by WEBES. Other needed information may include the product number and serial number of the system.

Upon completion of the WEBES install, WEBES will send email similar to the example below, if it discovers CV EVA.

```
From: sea@MYCVSERVER.cxo.hp.com [mailto:sea@MYCVSERVER.cxo.hp.com]
Sent: Friday, February 09, 2007 7:33 PM
To: Schmoe, Joseph
Subject: ATTENTION NEEDED: MYCVSERVER managed entity added to System Event Analyzer
```

Dear Customer,

```
The System Event Analyzer has detected that the following device CommandView
EVA Server: MYCVSERVER is now being managed.
You must enter the new device product and serial number for proper call
logging.
Please open the following link and provide the required information for the
new device.
    http://MYCVSERVER:7902/managedentities?infoNeeded
```

Thank you,
Hewlett-Packard Services.

Refer to *WEBES User Guide section Managed Entities* for details on completing the information for the CV EVA Server managed entity.

2.3.6.2 Completing Data for EVAs

In addition to discovering CV EVA, WEBES will also discover any EVAs currently being managed by CV EVA and create a Managed Entity for each, of type “EVA.” It will fill in what information it can discover, but the user must complete the rest of the information.

If CV EVA prior to version 6 is installed, then no username and password is required for WEBES to communicate with CV EVA. In this case, WEBES will discover any EVAs by conversing with CV EVA immediately after WEBES is installed.

If CV EVA version 6 or later is installed, then WEBES cannot communicate with CV EVA until the user enters the CV EVA user name and password as described in the above section [2.3.6.1 Completing Data for Command View EVA Servers](#). Soon after that has been completed, WEBES will discover any EVAs by conversing with CV EVA.

Regardless of the version of CV EVA installed, whenever WEBES discovers EVAs and creates Managed Entities for them, it will send an email for each EVA similar to the example below.

```
From: sea@MYCVSERVER.cxo.hp.com [mailto:sea@MYCVSERVER.cxo.hp.com]
Sent: Friday, February 09, 2007 7:35 PM
To: Schmoe, Joseph
Subject: ATTENTION NEEDED: MyEVA2 managed entity added to System Event
Analyzer
```

Dear Customer,

The System Event Analyzer has detected that the following device EVA: MyEVA2 is now being managed. You must enter the new device product and serial number for proper call logging. Please open the following link and provide the required information for the new device.

<http://MYCVSERVER:7902/managedentities?infoNeeded>

Thank you,
Hewlett-Packard Services

Refer to *WEBES User Guide section Managed Entities* for details on completing the information for the EVA managed entity.

2.3.7 Adding an EVA After Installing WEBES

When an EVA is added to the configuration after WEBES has been installed, take the following actions:

1. Install and Configure the EVA using the CommandView EVA software. Note: The EVA Name must be assigned so that WEBES can recognize it.
2. Stop and re-Start the Director on each node from which CommandView EVA can manage the new EVA, either with the Start menu:
 - Start...Programs...Hewlett-Packard Service Tools...Web-Based Enterprise Services...Stop Director
 - Start...Programs...Hewlett-Packard Service Tools...Web-Based Enterprise Services...Start Director

or

- Open a Command Prompt window and execute these two commands:

- net stop desta_service
- net start desta_service

3. Enter the new EVA's configuration information into the SEA Managed Entity Web interface:

- Browse to the SEA Web Interface page <http://<nodename>:7902>
You will be presented with a new screen that allows you to enter the Managed Entity information.

Refer to Section 2.2 'Installing WEBES' for more information on Managed Entity Web Interface.

Refer to the WEBES User's Guide, chapter 7 "Web Interface", for more information on the SEA Managed Entity Web interface.

Managed Entity information must be entered for each EVA managed by CommandView EVA operating on the same node as WEBES-SEA. This new feature provides entitlement information that is passed with the notifications sent to ISEE.

Failure to enter this information will cause the notifications generated for the new EVA to be ignored by the ISEE backend.

Email notifications for the events will be sent. All nodes running CommandView EVA configured to manage the new EVA must have WEBES-SEA Managed Entity information updated.

If you configure the new EVA using CommandView, but do not configure the same EVA in the SEA Managed Entity Web interface, you will receive email from SEA within 12 hours after the CommandView configuration is complete, asking you to configure the new EVA for SEA. SEA sends an email using the settings entered for email SMTP server and email addresses during the SEA part of the WEBES installation (see WEBES User's Guide chapter "Automatic Notifications" for details on where this information is stored and how to change it after WEBES installation). The email has a link to an URL which takes you to the Web interface where you can enter the EVA's information.

2.3.8 Installing or Upgrading ISEE Client After Installing or Upgrading WEBES

If you install or upgrade your version of WEBES, and then later install or upgrade your version of the ISEE Client software on the same system, then you must follow these steps after the ISEE install or upgrade, to allow SEA to send EVA collections to HP via ISEE:

1. In a Command Prompt window, "cd" to the directory containing the script which raises the limit, that can vary depending on where you installed WEBES. For example:
`cd C:\Program Files\Hewlett-Packard\svctools\specific\ca\config`
2. Execute the following command:

Installing on Windows

2.4 Upgrading WEBES

```
cscript changeFileSizeLimit.js 3
```

This will change the file size limit to 3 MB, which is sufficient for SEA's purposes (10 is the maximum).

3. A log file is created in the current directory named changeISEEFileLimit.log. Open this log file in an editor such as Notepad, to see whether the script is executed successfully or not.
4. If ISEE is installed after WEBES, then enter this command in a Command Prompt window:

```
desta isee on
```

This will enable WEBES to ISEE notifications. If ISEE is already installed when WEBES is installed, then WEBES will enable ISEE notification by default. If ISEE is upgraded (rather than installed) while WEBES is already installed, this step is not necessary.

2.3.9 Configuring SNMP Traps to Send Notifications to HP-SIM

To configure SNMP traps to send notifications to HP-SIM, follow these steps:

1. Start the Director
2. Execute `desta snmp on` command
3. Enter the SNMP host name (you will be prompted to enter the SNMP host name)
4. Enter the Trap Type to use (you will be prompted to enter “Which Trap Type to use”. The trap type supported are 2 and 3). WEBES displays the message “SNMP Service Trap notification is now enabled”.

To turn off the SNMP Trap Notification, execute `desta snmp off` command.

2.4 Upgrading WEBES

Note

Before upgrading WEBES, reinitialize the system error log as described in Section 2.1.6, [Archiving and Cleaning the Windows Event Log](#).

This section applies when upgrading to this version of WEBES with an existing version of WEBES that is within 2 releases (versions) of this version of WEBES. For example, WEBES v4.5.1 can be upgraded when either v4.5 or v4.4.4 is installed, but not if v4.4.3 or earlier is

installed. If an upgrade is attempted on a version of WEBES that is too old, you will be told to uninstall the existing version, and the upgrade will not proceed.

If WEBES is already uninstalled or was never installed at all, see Section 2.2, [Installing WEBES](#).

Upgrading lets you preserve your configuration and state data. Be aware that upgrading uninstalls the older version of WEBES and installs the newer version—the upgrade does not simply patch or replace certain files, as was the case with WEBES Service Paks.

Whenever a version of WEBES is already installed that is capable of being upgraded, the WEBES kit informs you that the older version was detected and prompts you about upgrading.

If you answer Yes, the kit does the following:

1. Saves configuration and state data to %SystemDrive%\WebesBackup, where %SystemDrive% is the drive where Windows (not necessarily WEBES) was installed.
2. Uninstalls the existing installation.
3. Installs this version with the same components (SEA or CCAT) that were present before.
4. Restores the saved data.
5. Deletes the WebesBackup directory and all of its contents.

If you answer No, the kit exits and the existing version of WEBES will not be upgraded. If desired, you can uninstall the existing WEBES copy yourself, but then not all data will be migrated upon installing the newer version as described in Section 2.2, [Installing WEBES](#).

2.5 Downgrading WEBES

Do not save configuration data if you are going back to an earlier WEBES version, for example 5.0 to 4.5.1. The stored configuration data may not be compatible with an earlier version.

2.6 Uninstalling WEBES

The WEBES setup lets you uninstall via the Windows applet for adding and removing programs.

2.6.1 Uninstalling Individual WEBES Tools

To uninstall an individual WEBES tool, follow these steps:

1. If you have not already done so, log on using an account with administrator privileges.
2. Completely close the tool if it is running.

Installing on Windows

2.6 Uninstalling WEBES

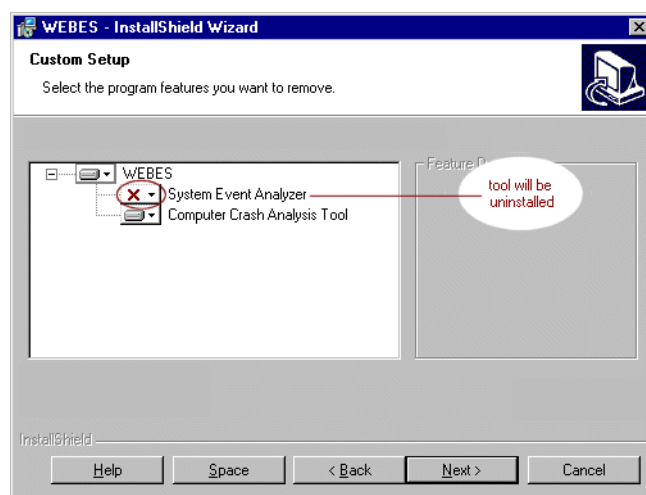
3. In the Windows applet for adding and removing programs, highlight HP WEBES.

2000: Start | Settings | Control Panel | Add/Remove Programs

XP: Start | Control Panel | Add or Remove Programs

4. Press the Change/Remove button to run the setup wizard.
5. When prompted, choose the Modify option.
6. Change the selection button next to the tools that you want to remove as shown in Figure 2–12.

Figure 2–13 Removing a WEBES Tool



7. Follow the prompts to proceed with uninstallation.

2.6.2 Uninstalling All WEBES Tools

To uninstall all WEBES tools, follow these steps:

1. If you have not already done so, log on using an account with administrator privileges.
2. Completely close all tools that are running.
3. In the Windows applet for adding and removing programs, highlight HP WEBES.

2000: Start | Settings | Control Panel | Add/Remove Programs

XP: Start | Control Panel | Add or Remove Programs

4. Press the Change/Remove button to run the setup wizard.
5. When prompted, choose the Remove option.
6. Follow the prompts to proceed with uninstallation.

2.6.3 Uninstalling on Terminal Servers

Terminal Server WEBES uninstallation guidelines apply to these operating systems:

- Windows 2000 Server and Advanced Server, when Terminal Services are enabled
- Windows XP when Remote Desktop connections are enabled

From Console—Terminal Server system uninstallations should be performed from the Terminal Server console by an administrator (either the Administrator account or any account in the Administrators group).

For the best results, make sure that no clients are logged on to the server during WEBES uninstallation. You can send clients a message about the time and duration of the uninstallation and then disable all connections before starting.

Otherwise, the process for uninstalling is the same as any other Windows WEBES uninstallation.

From Client—Uninstall from a Terminal Services client as follows:

1. Log on to the Terminal server as an administrator and close all applications.
2. Uninstall the program as with any other Windows WEBES uninstallation.

2.6.4 Uninstalling on a Storage Management Appliance

For purposes of WEBES, the HP OpenView Storage Management Appliance (SMA) is considered a Windows 2000 system. However, the SMA is a “headless” Integrity Server, meaning it is designed to be configured and allowed to run with minimal direct user interaction—without a physical monitor, keyboard, or mouse attached.

You can connect to the Windows 2000 desktop on the SMA using two methods:

- By directly connecting a monitor, keyboard, and mouse
- By running the Microsoft Terminal Services client (renamed to Remote Desktop in Windows XP)

Every SMA is preconfigured to accept Terminal Services client connections because the Terminal Services server is preinstalled. Users who do not already have a copy of the Terminal Services client can download it from the following URL:

`http://www.microsoft.com/windows2000/downloads/recommended/TSAC/tsmsi.asp?Lang`

See Section 2.6.3, [Uninstalling on Terminal Servers](#), for more information.

Desktop connections also require the account username and password for the SMA. The factory-set defaults are username **administrator** and password **admin#####**, where #####

Installing on Windows

2.6 Uninstalling WEBES

is the last six characters of the serial number in reverse order. The password is case sensitive, and you are advised to change it (if you have not already done so) for better system security.

2.6.5 WCCProxy Refresh Issue

WCCProxy continues to show up in the Add/Remove Programs window even after uninstalling WCCProxy until you hit F5 or close and re-open the Add/Remove Programs window.

Note

WEBES uninstall will not remove WCCProxy if another tool such as ISEE still needs it. So, if WCCProxy remains after hitting F5, it is likely that WCCProxy is still installed which is correct. This is as per WEBES design.

2.6.6 Manual Removal of WCCProxy

If WCCProxy fails to be removed by WEBES or ISEE and remains installed after both tools have been removed, you can remove it manually from the Add/Remove Programs utility. Answer the popup prompts affirming that you wish to remove WCCProxy.

Do not remove WCCProxy using Add/Remove Programs if either WEBES or ISEE is installed, as it will leave them non-operational.

Installing on HP-UX

This chapter describes how to install the WEBES tools on an HP HP-UX system. The information in this chapter is organized as follows:

Pre-Installation	page 3–2
Installing WEBES	page 3–4
SEA Installation Notes	page 3–9
CCAT Installation Notes	page 3–10
Post-Installation	page 3–10
Upgrading WEBES	page 3–11
Uninstalling WEBES	page 3–12

3.1 Pre-Installation

Note

You can install and run WEBES on HP-UX, but currently it does not analyze a *native* error log for events occurring on that platform.

You can, however, copy an error log from another system (Windows or OpenVMS) to an HP-UX system for manual analysis there.

Follow these pre-installation guidelines. Depending on which WEBES components you wish to install, ensure that your system meets the requirements described in the appropriate sections:

- [3.1.1 WEBES Common System Requirements](#)
- [3.1.2 SEA System Requirements](#)
- [3.1.3 CCAT System Requirements](#)

Also, see the following additional pre-installation guidelines:

- [3.1.4 Permissions](#)
- [3.1.5 Extracting the Installation Kit](#)

3.1.1 WEBES Common System Requirements

The system must meet the following basic requirements before you install WEBES:

- Processor architecture—HP 9000 series and HP Integrity series
- Operating system—
For HP 9000 series (PA-RISC): HP-UX version 11.11 or higher or higher
For HP Integrity series (Intel® Itanium®): HP-UX version 11.23 or higher
- Quality Pack—Suitable quality pack. The quality pack includes an upgrade for the ps command, which is used by the desta script.
- Minimum 126 MB free disk space for installation of core components
- Virtual memory—800MB of virtual memory is recommended.

During standard operation, SEA uses far less memory. For example, when the Director is idle, usage stays generally around 24MB for systems with all the WEBES tools installed.

The Director only approaches the maximum value when a high volume of events arrive or an extremely large log file is processed. Even then, the memory usage may remain significantly below the maximum value. The virtual memory requirement is intended to set a threshold for the absolute maximum amount of memory that will ever be needed. If the threshold is exceeded, the Director terminates with out-of-memory error.

Virtual memory for a process is stored in RAM and the swap partitions on your disk. The space allocated must be sufficient to run WEBES and all other applications that you want to run simultaneously.

If the virtual memory requirement given here is too large or too small for your environment, you are free to make adjustments. You may want to experiment with various settings to find the optimal value. Refer to the *WEBES User Guide* for more information on adjusting the memory settings.

- TCP/IP services must be installed and running.

3.1.2 SEA System Requirements

In addition to the common WEBES prerequisites, your system must meet the following requirements before you install the SEA component:

- Minimum 32 MB additional free disk space
- Web browser—Table 3–1 describes the browser prerequisites for SEA according to the following categories:
 - Supported—fully tested
 - As-is—not officially tested but may work reasonably well
 - Unsupported—known not to work

Table 3–1 HP-UX Browser Requirements

Category	Browser
Supported	Netscape 4.78 or 4.79, Mozilla 1.4 or later
As-is	Netscape earlier than 4.78 Mozilla earlier than 1.4
Unsupported	Netscape 6.x

Web browsers can use different Java runtime environments, but the SEA web interface requires certain versions of Java for each web browser.

- Netscape—Either the Netscape Java VM which is always included with Netscape, or a Sun JRE version 1.2 or higher.

Installing on HP-UX

3.2 Installing WEBES

- Mozilla—Sun JRE version 1.3.1 or higher.
Mozilla does not include any Java VM. You must download and install a Sun JRE. You can check the version by selecting Tools | Web Development | Java Console. The Java version is given on the first line of the Java Console window.

Sun Java is available at:

`http://java.sun.com/getjava`

Install any desired web browsers before installing the Sun JRE. The JRE installation then finds and updates installed web browsers so that they use the Sun JRE.

3.1.3 CCAT System Requirements

In addition to the common WEBES prerequisites, your system must meet the following requirements before you install the CCAT component:

- Minimum 15 MB additional free disk space

3.1.4 Permissions

To install, upgrade, downgrade or uninstall WEBES, you must be logged on as the root user. The `/opt/hp/svctools` directory is owned by root, and has `rwX` (read, write, and execute) permissions for root (owner), and no permissions for any other user (group or world).

3.1.5 Extracting the Installation Kit

To extract the WEBES installation kit, place the kit `.gz` file in a temporary directory and unzip it:

```
# gunzip WEBES{version}.tar.gz
```

Then, untar the file:

```
# tar -xvf WEBES{version}.tar
```

This extracts the `WEBESWrapper.sh` file needed for installation.

3.2 Installing WEBES

After all [Pre-Installation](#) requirements are met, proceed with the two-step process to install WEBES.

1. First, run the [Component Installation](#) as described in Section 3.2.1. This step installs the files needed for the common components and any selected tools.
2. Then, run the [Interactive Configuration Utility](#) as described in Section 3.2.2. Note that you can return to the utility at any future time, should you wish to modify your WEBES installation.

Note

If you have installed any pre-release build of any version of WEBES, and you wish to replace it with the official final kit build of the same version, you must uninstall the existing WEBES installation before installing the final kit. Do not attempt to install the later kit without first uninstalling the earlier kit. Upgrades from one WEBES version to another version within two version numbers are supported, but you cannot upgrade from one build to another build of the same WEBES version.

Do not save configuration data if you are going back to an earlier WEBES version, for example 5.0 to 4.5.1. The stored configuration data may not be compatible with an earlier version.

The installation procedure for HP-UX Integrity systems is same as the installation procedure for HP-UX PA-RISC systems.

3.2.1 Component Installation

Follow these steps to install the files for the WEBES common components (WCC) plus any tools you select:

1. Enter the following command to start the install wrapper, which checks for prerequisites, installs the WCCProxy, and launches an interactive interface (either terminal-based character/keyboard inputs or a GUI):

```
# ./WEBESWrapper.sh
```

WEBES will not install to a non-default directory. The default directory is required for proper WEBES operation.

This wrapper script will do the necessary prerequisite checks for WEBES kit installation. Upon successful installation of the WEBES kit, dependent subset installation and configuration can be done using the `webes_install_update` script.

2. Wait for the list of components to appear. This may take several moments.
3. Highlight each desired component. WEBESBASE is required.
4. Choose Actions | Install from the menus to start tool installation.

The system displays a note similar to the following:

The software "WEBESBASE451,r=V4.5.1,a=v=HP" was successfully marked, but it depends on the following software items which could not be found in the source. However, these items may already be in the target. This will be

Installing on HP-UX

3.2 Installing WEBES

```
checked during the Analysis Phase:
WEBESPROXY140.WEBESPROXY140
The software "WEBESCCAT520,r=V5.2.0,a=,v=HP" was successfully marked, but
it depends on the following software items which could not be found in the
source. However, these items may already be in the target. This will be
checked during the Analysis Phase:
WEBESPROXY140.WEBESPROXY140
The software "WEBESSEA450,r=V4.5.0,a=,v=HP" was successfully marked, but
it depends on the following software items which could not be found in the
source. However, these items may already be in the target. This will be
checked during the Analysis Phase:
WEBESPROXY140.WEBESPROXY140
```

The note appears because the WEBES components also require the WCCProxy. You can safely okay the note, because the kit detects the presence of the WCCProxy during the Analysis Phase.

5. At the very end of the install, choose File | Exit from the menus to close the interface that lists the components.

During installation, the system may display other informational messages, but you do not need to answer configuration questions until you run the [Interactive Configuration Utility](#) as described in Section [3.2.2](#).

3.2.2 Interactive Configuration Utility

Enter the following to launch the interactive configuration utility:

```
# webes_install_update
```

If you need help with a specific field while running the interactive configuration utility, type ? and press the Enter key.

3.2.2.1 Initial Configuration

You must define your system the first time that you run the interactive configuration utility. The values that you enter persist until you change them or choose to remove the profile when uninstalling WEBES.

Customer Information—Enter and/or confirm the customer information described in Table [3-2](#).

Table 3–2 Customer Information Required for Initial Configuration

Question	Example	Notes
Contact name	Chris Green	
Company name	XYZ Company	
Company address	123 Main Street Metropolis, VA 22222 USA	You are allowed three lines when entering the company address.
Contact phone	123-456-7890	
Contact email address	chris.green@xyz.com	

System Information—Enter and/or confirm the system specific information described in Table 3–3.

Table 3–3 System Information Required for Initial Configuration

Question	Example	Notes
SMTP contact (email)	chris.green@xyz.com	Email address at which you will receive all other notifications
Customer SMTP server	mailsys.xyz.com	
System type	Type 1	
System model	Model A1	
System serial number	A01234567890	

Profile—The system converts your information into a basic profile file at /opt/hp/svctools/specific/desta/config/profile.txt. The profile is attached to any outgoing system-initiated messages.

Service Obligation—Finally, enter and/or confirm service obligation information as described in Table 3–4.

Installing on HP-UX

3.2 Installing WEBES

Table 3–4 Service Obligation Information Required for Initial Configuration

Question	Example	Notes
Service provider name	HP	
System serial number	A01234567890	
Service obligation number	A01234567890	The default is usually the system serial number.
Service obligation start date	20-Feb-2002	The default is usually the current date.

3.2.2.2 Configuration Options

After initial configuration, and any time that you rerun the utility thereafter, you are presented with a menu similar to the following:

- 1) Remove System Event Analyzer
- 2) Remove Computer Crash Analysis Tool
- 3) Remove all of the Web-Based Enterprise Services suite
- 4) Start at Boot Time
- 5) Customer Information
- 6) System Information
- 7) Service Obligation
- 8) Start WEBES Director
- 9) Stop WEBES Director
- 10) Help
- 11) Quit

Enter the number for your choice (see Table 3–5). The menu reappears after completing the selected operation. You can continue making selections or quit.

Selections requiring that the WEBES Director process first be stopped (for example, for tool installation) automatically stop the Director. You can restart it manually upon completing your selection, or you are prompted to restart it when you quit the interactive utility.

Table 3–5 Configuration Options

Selection	Description
Install System Event Analyzer (SEA)	Installs the SEA tool. If SEA was already installed, this option would allow you to uninstall it. See the SEA Installation Notes for more information.
Install Computer Crash Analysis Tool (CCAT)	Installs the CCAT tool. If CCAT was already installed, this option would allow you to uninstall it. See the CCAT Installation Notes for more information.
Remove all of WEBES	Uninstalls all of the WEBES common components and any tools that are present.
Start at Boot Time	Specifies whether to automatically start the WEBES Director process whenever the system starts
Customer Information	Allows you to confirm or modify the customer data entered during Initial Configuration .
System Information	Allows you to confirm or modify the system data entered during Initial Configuration .
Service Obligation	Allows you to confirm or modify the service obligation data entered during Initial Configuration .
Start WEBES Director	Manually starts the WEBES Director process
Stop WEBES Director	Manually stops the WEBES Director process
Help	Displays textual help for the interactive configuration utility
Quit	Closes the interactive configuration utility. If the WEBES Director is not running, you are given the opportunity to start it.

3.3 SEA Installation Notes

There are no additional considerations when installing SEA. Any settings for error log scanning or automatic notifications would be meaningless, because there is no binary system error log on HP-UX for SEA to monitor.

3.4 CCAT Installation Notes

CCAT also asks you to enter the email address where you want to receive copies of CCAT notifications.

3.5 Post-Installation

Be aware of the following post-installation procedures.

- [3.5.1 Path Update](#)
- [3.5.2 Determining Which Tools are Installed](#)
- [3.5.3 Determining Which Versions are Installed](#)
- [3.5.4 Storing User Files](#)

3.5.1 Path Update

After installing WEBES and its components, you also should execute the appropriate shell command to update path information so that you can enter WEBES commands without having to type the full path. For example, in the c shell, run the command:

```
# rehash
```

3.5.2 Determining Which Tools are Installed

On any system that you are unsure about, you can determine what parts of WEBES are installed by running `webes_install_update` and checking the menu for tools that you can remove. (If you can remove a tool, it must be installed.)

3.5.3 Determining Which Versions are Installed

To determine what versions of WEBES and its component tools are installed, open and read the text files shown in Table 3–6.

Table 3–6 Determining WEBES and Tool Versions

Tool	File for Version Information
WEBES Overall Kit	/opt/hp/svctools/common/webes/release.txt

Table 3–6 Determining WEBES and Tool Versions

Tool	File for Version Information
WEBES Common Components (WCC)	/opt/hp/svctools/common/desta/release.txt
SEA	/opt/hp/svctools/common/ca/release.txt
CCAT	/opt/hp/svctools/common/ccat/release.txt

The files list the component versions for the release. Generally, they match the overall WEBES version number. The files in Table 3–6 also may reveal a “build” number, but those are not necessarily intended to match across components.

3.5.4 Storing User Files

WEBES includes “userdata” subdirectories under the WEBES svctools directory tree as follows:

```
/opt/hp/svctools/common/ca/userdata
/opt/hp/svctools/common/ccat/userdata
/opt/hp/svctools/common/desta/userdata
/opt/hp/svctools/common/webes/userdata

/opt/hp/svctools/specific/ca/userdata
/opt/hp/svctools/specific/ccat/userdata
/opt/hp/svctools/specific/desta/userdata
/opt/hp/svctools/specific/webes/userdata
```

When using WEBES, store your own files (such as binary event logs or CCAT crash dump files) under these subdirectories.

- Storing files under the userdata subdirectories makes them easily accessible in the WEBES user interfaces. For example, SEA automatically lists any binary event logs from the ca/userdata subdirectories under Other Logs.
- In WEBES 4.1 or later, files stored under the userdata subdirectories are preserved and restored during WEBES uninstallations and reinstallations.

3.6 Upgrading WEBES

This section applies when upgrading to this version of WEBES with an existing version of WEBES that is within 2 releases (versions) of this version of WEBES. For example, Upgrade is possible to WEBES v4.5.1 when either v4.5 or v4.4.1 is installed, but not if v4.4 or earlier is installed. If an upgrade is attempted on a version of WEBES that is too old, you will be prompted to uninstall the existing version, and the upgrade will not proceed.

If WEBES is already uninstalled or was never installed at all, see Section 3.2, [Installing WEBES](#).

Installing on HP-UX

3.7 Uninstalling WEBES

Upgrading lets you preserve your configuration and state data. Be aware that upgrading uninstalls the older version of WEBES and installs the newer version—the upgrade does not simply patch or replace certain files, as was the case with WEBES Service Paks.

To upgrade WEBES, run the following file:

```
./webes_update.sh
```

Whenever a version of WEBES is already installed that is capable of being upgraded, the WEBES kit informs you that the older version was detected and prompts you about upgrading.

If you answer Yes, the kit does the following:

1. Saves configuration and state data to the save and userdata directories. The save and userdata directories are present under respective components (svctools_home/specific).
2. Uninstalls the existing installation.
3. Installs this version with the same components (SEA or CCAT) that were present before.
4. Restores the saved data.

If you answer No, the kit exits and the existing version of WEBES will not be upgraded. If desired, you can uninstall the existing WEBES copy yourself, but then not all data will be migrated upon installing the newer version as described in Section 2.2, [Installing WEBES](#).

NOTE: Do not save configuration data if you are going back to an earlier WEBES version, for example 5.0 to 4.5.1. The stored configuration data may not be compatible with an earlier version.

3.7 Uninstalling WEBES

The following sections describe how to remove WEBES tools from a HP-UX system.

3.7.0.1 Uninstalling Individual WEBES Tools

Run the interactive webes_install_update utility to remove individual WEBES tools, and follow any prompts that appear.

3.7.0.2 Uninstalling All WEBES Tools

Run the interactive webes_install_update utility, choose the option to remove all of WEBES, and follow any prompts that appear.

Installing on Linux

This chapter describes how to install the WEBES tools on a Red Hat Linux system. The information in this chapter is organized as follows:

Pre-Installation	page 4-2
Installing WEBES	page 4-5
SEA Installation Notes	page 4-9
CCAT Installation Notes	page 4-9
Post-Installation	page 4-9
Upgrading WEBES	page 4-11
Uninstalling WEBES	page 4-12

4.1 Pre-Installation

Note

You can install and run WEBES on Linux, but currently it does not analyze a *native* error log for events occurring on that platform.

You can, however, copy an error log from another system (Windows or OpenVMS) to a Linux system for manual analysis there.

Follow these pre-installation guidelines. Depending on which WEBES components you wish to install, ensure that your system meets the requirements described in the appropriate sections:

- [4.1.1 WEBES Common System Requirements](#)
- [4.1.2 SEA System Requirements](#)
- [4.1.3 CCAT System Requirements](#)

Also, see the following additional pre-installation guidelines:

- [4.1.4 Permissions](#)
- [4.1.5 Extracting the Installation Kit](#)

4.1.1 WEBES Common System Requirements

The system must meet the following basic requirements before you install WEBES. This version of WEBES for Linux does not support Linux clusters.

- Processor architecture—HP 32-bit Intel based systems

Non-HP Systems: WEBES is a proprietary service tool and is not a fully qualified off-the-shelf product such as Norton SystemWorks. As such, only platforms manufactured by HP, such as the ProLiant, are officially supported.

Engineering normally expects that WEBES will operate correctly on any industry standard, 32-bit Intel-based system. However, because HP does not qualify WEBES on third-party products, functionality on such systems is provided on an as-is basis only.

- Operating system
 - Red Hat Enterprise Linux Application Server 3.0 and 4.0
 - Red Hat Enterprise Linux Enterprise Server 3.0 and 4.0
- Minimum 61 MB free disk space for installation of all components
- Virtual memory—800 MB of virtual memory is recommended.

During standard operation, SEA uses far less memory. For example, when the Director is idle, usage stays generally around 24MB for systems with all the WEBES tools installed.

The Director only approaches the maximum value when a high volume of events arrive or an extremely large log file is processed. Even then, the memory usage may remain significantly below the maximum value. The virtual memory requirement is intended to set a threshold for the absolute maximum amount of memory that will ever be needed. If the threshold is exceeded, the Director terminates with out-of-memory error.

Virtual memory for a process is stored in RAM and the swap partitions on your disk. The space allocated must be sufficient to run WEBES and all other applications that you want to run simultaneously.

If the virtual memory requirement given here is too large or too small for your environment, you are free to make adjustments. You may want to experiment with various settings to find the optimal value. Refer to the *WEBES User Guide* for more information on adjusting the memory settings.

- TCP/IP services must be installed and running.

4.1.2 SEA System Requirements

In addition to the common WEBES prerequisites, your system must meet the following requirements before you install the SEA component.

- Minimum 32 MB of space in the file system containing the directory to which you install WEBES (/usr/opt/hp/svctools).
- Web browser—Table 4–1 describes the browser prerequisites for SEA according to the following categories:
 - Supported—fully tested
 - As-is—not officially tested but may work reasonably well
 - Unsupported—known not to work

Table 4–1 Linux Browser Requirements

Category	Browser
Supported	Mozilla 1.4 or later Netscape 7.1 ¹ with: <ul style="list-style-type: none">• The plug-in for Java applications installed• Security notifications disabled Netscape 4.8 or 4.9
As-is	Netscape earlier than 4.8 Mozilla earlier than 1.4
Unsupported	Netscape 6.x

Installing on Linux

4.1 Pre-Installation

¹ If you run Netscape 7.1 and have multiple browser windows open, Netscape overwrites its own windows with new pages when you follow links.

Web browsers can use different Java runtime environments, but the SEA web interface requires certain versions of Java for each web browser.

- Netscape—Either the Netscape Java VM which is always included with Netscape, or a Sun JRE version 1.2 or higher.
- Mozilla—Sun JRE version 1.3.1 or higher.
Mozilla does not include any Java VM. You must download and install a Sun JRE. You can check the version by selecting Tools | Web Development | Java Console. The Java version is given on the first line of the Java Console window.

Sun Java is available at:

`http://java.sun.com/getjava`

Install any desired web browsers before installing the Sun JRE. The JRE installation then finds and updates installed web browsers so that they use the Sun JRE.

4.1.3 CCAT System Requirements

In addition to the common WEBES prerequisites, your system must meet the following requirements before you install the CCAT component.

- Minimum 3MB free disk space

4.1.4 Permissions

To install, upgrade, or uninstall WEBES, you must be logged on as the root user. The `/usr/opt/hp/svctools` directory is owned by root, and has rwx (read, write, and execute) permissions for root (owner), and no permissions for any other user (group or world).

4.1.5 Extracting the Installation Kit

To extract the WEBES installation kit, place the kit .gz file in a temporary directory and untar it:

```
# tar -xzf WEBES{version}.tar.gz
```

This command creates a kit directory (if it does not already exist), and extracts the `WEBESWrapper.sh` file needed for installation:

```
WEBESWrapper.sh WEBESBASE-4.5-0.i386.rpm WEBESPROXY-1.2-1.i386.rpm
```

WEBESSEA-4.3-2.i386.rpm WEBESCCAT-5.1-1.i386.rpm

4.2 Installing WEBES

After all [Pre-Installation](#) requirements are met, proceed with the two-step process to install WEBES.

1. First, run the [Common Component Installation](#) as described in Section 4.2.1. This step installs the files needed for the common components.
2. Then, run the [Interactive Configuration Utility](#) as described in Section 4.2.2. The utility lets you define your customer and system information, and installs the individual WEBES tools that you want. Note that you can return to the utility at any future time, should you wish to modify your WEBES installation.

Note

If you have installed any pre-release build of any version of WEBES, and you wish to replace it with the official final kit build of the same version, you must uninstall the existing WEBES installation before installing the final kit. Do not attempt to install the later kit without first uninstalling the earlier kit. Upgrades from one WEBES version to another version within two version numbers are supported, but you cannot upgrade from one build to another build of the same WEBES version.

4.2.1 Common Component Installation

Change to the kit directory under the directory where you extracted the kit in Section 4.1.5:

```
# cd kit
```

Enter the following command to install the files for the WEBES common components ([WCC](#)) plus any tools you select:

```
# ./WEBESWrapper.sh
```

WEBES will not install to a non-default directory. The default directory is required for proper WEBES operation.

The wrapper checks for prerequisites and then installs the WEBES common components, including the base kit and WCCProxy:

This wrapper script will do the necessary prerequisite checks for WEBES kit installation. Upon successful installation of the WEBES kit, dependent subset installation and configuration can be done using the `webes_install_update` script.

Installing on Linux

4.2 Installing WEBES

During installation, the system displays informational messages, but you do not need to answer configuration questions until you run the [Interactive Configuration Utility](#) as described in Section [4.2.2](#).

4.2.2 Interactive Configuration Utility

Enter the following to launch the interactive configuration utility:

```
# /usr/sbin/webes_install_update
```

If you need help with a specific field while running the interactive configuration utility, type **?** and press the Enter key.

4.2.2.1 Initial Configuration

You must define your system the first time that you run the interactive configuration utility. The values that you enter persist until you change them or choose to remove the profile when uninstalling WEBES.

Path—Enter the path to where you extracted the kit in Section [4.1.5](#).

Customer Information—Enter and/or confirm the customer information described in Table [4-2](#).

Table 4-2 Customer Information Required for Initial Configuration

Question	Example	Notes
Contact name	Chris Green	
Company name	XYZ Company	
Company address	123 Main Street Metropolis, VA 22222 USA	You are allowed three lines when entering the company address.
Contact phone	123-456-7890	
Contact email address	chris.green@xyz.com	

System Information—Enter and/or confirm the system specific information described in Table [4-3](#).

Table 4–3 System Information Required for Initial Configuration

Question	Example	Notes
SMTP contact (email)	chris.green@xyz.com	Email address at which you will receive all other notifications
Customer SMTP server	mailsys.xyz.com	
System type	Type 1	
System model	Model A1	
System serial number	A01234567890	

Notification Profile—By default, the installation can automatically create your automated notification profile based on customer and system entries from Tables 4–2 and 4–3. The profile gets stored in a text file that you can modify with an editor, if desired:

```
/usr/opt/hp/svctools/specific/desta/config/profile.txt
```

Service Obligation—Finally, enter and/or confirm service obligation information as described in Table 4–4.

Table 4–4 Service Obligation Information Required for Initial Configuration

Question	Example	Notes
Service provider name	Hewlett-Packard	
System serial number	A01234567890	
Service obligation number	A01234567890	The default is usually the system serial number.
Service obligation start date	20-Feb-2002	The default is usually the current date.

4.2.2.2 Configuration Options

After initial configuration, and any time that you rerun the utility thereafter, you are presented with a menu similar to the following:

- 1) Install System Event Analyzer
- 2) Install Computer Crash Analysis Tool
- 3) Remove all of the Web-Based Enterprise Services suite
- 4) Start at Boot Time
- 5) Customer Information

Installing on Linux

4.2 Installing WEBES

- 6) System Information
- 7) Service Obligation
- 8) Start WEBES Director
- 9) Stop WEBES Director
- 10) Help
- 11) Quit

Enter the number for your choice (see Table 4–5). The menu reappears after completing the selected operation. You can continue making selections or quit.

Selections requiring that the WEBES Director process first be stopped (for example, for tool installation) automatically stop the Director. You can restart it manually upon completing your selection, or you are prompted to restart it when you quit the interactive utility.

Table 4–5 Configuration Options

Selection	Description
Install System Event Analyzer (SEA)	Installs the SEA tool. If SEA was already installed, this option would allow you to uninstall it. See the SEA Installation Notes for more information.
Install Computer Crash Analysis Tool (CCAT)	Installs the CCAT tool. If CCAT was already installed, this option would allow you to uninstall it. See the CCAT Installation Notes for more information.
Remove all of WEBES	Uninstalls all of the WEBES common components and any tools that are present.
Start at Boot Time	Specifies whether to automatically start the WEBES Director process whenever the system starts
Customer Information	Allows you to confirm or modify the customer data entered during Initial Configuration
System Information	Allows you to confirm or modify the system data entered during Initial Configuration
Service Obligation	Allows you to confirm or modify the service obligation data entered during Initial Configuration
Start WEBES Director	Manually starts the WEBES Director process
Stop WEBES Director	Manually stops the WEBES Director process
Help	Displays textual help for the interactive configuration utility
Quit	Closes the interactive configuration utility. If the WEBES Director is not running, you are given the opportunity to start it.

4.3 SEA Installation Notes

SEA asks you for the following additional information when you install it:

- The email address where you want to receive copies of SEA notifications
- Whether or not to delay the initial SEA scan
- Whether or not to start WEBES whenever the system boots

4.4 CCAT Installation Notes

CCAT also asks you to enter the email address where you want to receive copies of CCAT notifications.

4.5 Post-Installation

Be aware of the following post-installation procedures.

- [4.5.1 Path Update](#)
- [4.5.2 Determining Which Tools are Installed](#)
- [4.5.3 Determining Which Versions are Installed](#)
- [4.5.4 Storing User Files](#)

4.5.1 Path Update

After installing WEBES and its components, you may want to make the necessary modifications so that you can enter WEBES commands without having to type the full path. In other words, you can just enter **desta status** instead of **/usr/sbin/desta status**.

Use an editor to add /usr/sbin to the path in /home/username/.bashrc as shown in the following example:

```
export PATH="/usr/local/sbin:/usr/sbin:/sbin:${PATH}:${HOME}/bin"
```

Note that you can establish permission to run WEBES commands by using the sudoers facility or by being the root user, so you may need to edit .bashrc for individual users or the root user depending on your situation.

4.5.2 Determining Which Tools are Installed

On any system that you are unsure about, you can determine what parts of WEBES are installed by entering the following command:

Installing on Linux

4.5 Post-Installation

```
# rpm -qa | grep WEBES
```

```
WEBESBASE-4.3-2  
WEBESPROXY-1.2-1  
WEBESSEA-4.3-2  
WEBESCCAT-5.1-1
```

In the previous example, the WEBES base kit, SEA, CCAT, and the WCCProxy all are installed. Note that the version numbers may vary.

4.5.3 Determining Which Versions are Installed

To determine what versions of WEBES and its component tools are installed, open and read the text files shown in Table 4–6. Version numbers also appear in the output of the command shown in Section 4.5.2.

Table 4–6 Determining WEBES and Tool Versions

Tool	File for Version Information
WEBES Overall Kit	/usr/opt/hp/svctools/common/webes/release.txt
WEBES Common Components (WCC)	/usr/opt/hp/svctools/common/desta/release.txt
WCCProxy	/usr/opt/hp/svctools/common/wccproxy/release.txt
SEA	/usr/opt/hp/svctools/common/ca/release.txt
CCAT	/usr/opt/hp/svctools/common/ccat/release.txt

The files list the component versions for the release. Generally, they match the overall WEBES version number. The files in Table 4–6 also may reveal a “build” number, but those are not necessarily intended to match across components.

4.5.4 Storing User Files

WEBES includes “userdata” subdirectories under the WEBES svctools directory tree as follows:

```
/usr/opt/hp/svctools/common/ca/userdata  
/usr/opt/hp/svctools/common/ccat/userdata  
/usr/opt/hp/svctools/common/desta/userdata  
/usr/opt/hp/svctools/common/webes/userdata  
  
/usr/opt/hp/svctools/specific/ca/userdata  
/usr/opt/hp/svctools/specific/ccat/userdata  
/usr/opt/hp/svctools/specific/desta/userdata  
/usr/opt/hp/svctools/specific/webes/userdata
```


When using WEBES, store your own files (such as binary event logs or CCAT crash dump files) under these subdirectories.

- Storing files under the userdata subdirectories makes them easily accessible in the WEBES user interfaces. For example, SEA automatically lists any binary event logs from the ca/userdata subdirectories under Other Logs.
- Files stored under the userdata subdirectories are preserved and restored during WEBES uninstallations and reinstallations.

4.6 Upgrading WEBES

This section applies when upgrading to this version of WEBES with an existing version of WEBES that is within 2 releases (versions) of this version of WEBES. For example, WEBES v4.5 can be upgraded when either v4.4.2 or v4.4.3 is installed, but not if v4.4.1 or earlier is installed. If an upgrade is attempted on a version of WEBES that is too old, you will be prompted to uninstall the existing version, and the upgrade will not proceed.

If WEBES is already uninstalled or was never installed at all, see Section 2.2, [Installing WEBES](#).

Upgrading lets you preserve your configuration and state data. Be aware that upgrading uninstalls the older version of WEBES and installs the newer version—the upgrade does not simply patch or replace certain files, as was the case with WEBES Service Paks.

To upgrade WEBES, run the following file:

```
./webes_upgrade_linux.sh
```

Whenever a version of WEBES is already installed that is capable of being upgraded, the WEBES kit informs you that the older version was detected and prompts you about upgrading.

If you answer Yes, the kit does the following:

1. Saves configuration and state data to the save and userdata directories. The save and userdata directories are present under respective components (svctools_home/specific).
2. Uninstalls the existing installation.
3. Installs this version with the same components (SEA or CCAT) that were present before.
4. Restores the saved data.

If you answer No, the kit exits and the existing version of WEBES will not be upgraded. If desired, you can uninstall the existing WEBES copy yourself, but then not all data will be migrated upon installing the newer version as described in Section 2.2, [Installing WEBES](#).

4.7 Uninstalling WEBES

The following sections describe how to remove WEBES tools from a Linux system.

4.7.1 Using the Interactive Utility

Using the interactive utility is the easiest way to remove individual WEBES components or the entire WEBES suite.

4.7.1.1 Uninstalling Individual WEBES Tools

Run the interactive `/usr/sbin/webes_install_update` utility to remove individual WEBES tools, and follow any prompts that appear.

4.7.1.2 Uninstalling All WEBES Tools

Run the interactive `/usr/sbin/webes_install_update` utility, choose the option to remove all of WEBES, and follow any prompts that appear.

4.7.2 Using the rpm Utility

Although the rpm system utility can be used to remove WEBES or its components, you must be careful to remove components in the correct order. If you are unsure about using the rpm utility, refer to the rpm man page for more information.

Caution

Normally, the built-in dependencies prevent you from accidentally removing a needed kit. However, you can force a kit removal using the `-nodeps` switch, so these guidelines remain important.

When you are using the rpm utility, be aware of these dependencies:

- SEA and CCAT are dependent on the WEBES base kit, so the WEBES base kit must not be removed unless those tools are removed as well.
- The WEBES base kit is dependent on WCCProxy, so the WCCProxy must not be removed unless the WEBES base kit *and* all of its tools are removed as well.
- Also note that the ISEE Client is dependent on WCCProxy, so the WCCProxy also must not be removed if you have the ISEE Client installed.

Installing on Linux

4.7 Uninstalling WEBES

Given these dependencies, you may issue individual rpm commands in the correct order to uninstall WEBES as shown in the following example. Note that version numbers may vary, so you might want to first issue the `rpm -qa | grep WEBES` command as described in Section [4.5.2](#).

```
# rpm -e WEBESCCAT-5.1-1
# rpm -e WEBESSEA-4.3-2
# rpm -e WEBESBASE-4.3-2
# rpm -e WEBESPROXY-1.2-1
```

(Do not remove WEBESPROXY if the ISEE Client is installed.)

Installing on OpenVMS

This chapter describes how to install the WEBES tools on an HP OpenVMS system. The information in this chapter is organized as follows:

Pre-Installation	page 5–2
Installing WEBES	page 5–21
Post-Installation	page 5–25
Upgrading WEBES	page 5–35
Uninstalling WEBES	page 5–36

5.1 Pre-Installation

Follow these pre-installation guidelines. Depending on which WEBES components you wish to install, ensure that your system meets the requirements described in the appropriate sections:

- [5.1.1 WEBES Common System Requirements](#)
- [5.1.2 WEBES on Integrity \(Itanium\) Servers](#)
- [5.1.3 SEA System Requirements](#)
- [5.1.4 CCAT System Requirements](#)

Also, see the following additional pre-installation guidelines:

- [5.1.5 Privileges](#)
- [5.1.6 Archiving and Cleaning the Error Log](#)
- [5.1.7 Verifying the Serial Number](#)
- [5.1.8 Cluster Node Access to Install Directory](#)
- [5.1.9 Shared Non-System Disk Installations](#)
- [5.1.10 Extracting the Installation Kit](#)

5.1.1 WEBES Common System Requirements

The system must meet the following basic requirements before you install WEBES. In clusters, minimum requirements apply to each node in the cluster:

- Processor architecture—HP AlphaServer or Integrity (Itanium) Server (see section [5.1.2](#) for details about WEBES on Integrity)
- Operating system OpenVMS Alpha—7.3-2 or higher
- Operating system OpenVMS Itanium (Integrity)—8.2-1 or higher

Note that HP Sustaining Engineering maintains a schedule of support for the OpenVMS operating system. HP does not commit to supporting WEBES when installed on an operating system version that has exceeded its end-of-support date. See the following URL:

http://www.hp.com/hps/os/os_pvs_amap.html

- ODS-5 disk. If you try to install on ODS-2 disk, there will be an error stating ODS-5 is required.

Note

WEBES v4.5 will require an ODS-5 disk to install itself onto, regardless of the version of VMS you are running on, regardless of Itanium or Alpha. VMS has several types of hard drive formats, ODS-2 (the old standard) and a newer type ODS-5 that supports more complex filenames (and other features). Because WEBES v4.5 includes and uses the Java Runtime Environment version 1.5, and the JRE requires ODS-5 to run, WEBES v4.5 requires ODS-5.

Upgrade is NOT possible if the existing WEBES version is on ODS-2 disk. You will have to remove the old WEBES and then install WEBES v4.5.1 on an ODS-5 disk. See Section [Uninstalling WEBES](#) for procedure to remove WEBES.

Direct upgrade to WEBES v4.5.1 is possible only if your old WEBES happens to be on an ODS-5 disk, and it is one of the 2 previous versions (v4.4.2 or v4.4.3 for OpenVMS Alpha, v4.4.4 or v4.5 for OpenVMS Integrity).

- Minimum 64,000 blocks free disk space
- Virtual memory (PAGEFILE.SYS)—600MB of virtual memory is recommended.

During standard operation, SEA uses far less memory. For example, when the Director is idle, usage stays generally around 350MB for systems with all the WEBES tools installed. Idle usage often may be closer to 73MB, or 9000 8KB pages, even though 350MB of virtual memory is allocated. This discrepancy occurs because of how OpenVMS calculates and displays its memory usage.

The 600MB of virtual memory gets allocated when the Director starts, but as the Director subprocesses stop, memory gets released to the system and virtual memory usage decreases. As subprocesses are spawned during event processing, memory usage increases and then drops again when those subprocesses finish. The virtual memory requirement is intended to set a threshold for the absolute maximum amount of memory that will ever be needed. If the threshold is exceeded, the Director terminates with an out-of-memory error.

Virtual memory for a process is stored in RAM and the pagefile on your disk. The space allocated must be sufficient to run WEBES and all other applications that you want to run simultaneously.

Practically speaking, if there is very little physical memory to support the virtual memory setting, frequent paging occurs whenever WEBES starts or is running, thus reducing overall system performance. WEBES engineering recommends having about half (or more) as much physical RAM as the virtual memory setting. So, to support the 600MB virtual memory requirement and avoid excessive paging, you would want at least 256MB of physical RAM.

Installing on OpenVMS

5.1 Pre-Installation

You also can work backwards to determine the highest virtual memory setting to attempt. For example, if the system only has 128MB of physical RAM, the virtual memory setting should be reduced to about 250MB. Note that the lower value might cause the combined director and analyzer subprocesses to run out of memory should a flood of error events arrive for analysis.

If the virtual memory recommendation given here is too large or too small for your environment, you are of course free to make adjustments. You may want to experiment with various settings to find an optimal value. See the *SEA User Guide* for more information on adjusting the memory settings.

- Connectivity—TCP/IP installed and running

Even if TCP/IP traffic to other machines has been disabled, the ability to resolve the local host name into an IP address must be enabled. Otherwise, the Director cannot handle WEBES message traffic correctly and fails to start.

WEBES officially supports only two TCP/IP products for OpenVMS:

- HP TCP/IP Services for OpenVMS, version 5.4 or higher
- Process Software MultiNet (not TCPware)

Other TCP/IP products may work as-is, so the WEBES installation kit always completes regardless of what, if any, TCP/IP product is installed.

- Account quotas—WEBES includes a Java Runtime Environment which requires the following quota minimums. You may require higher quotas in order to run additional applications.

To change quotas, enter the following commands:

```
$ SET DEF SYS$SYSTEM
$ MCR AUTHORIZE

{ For Alpha and I64 systems: }
UAF> MODIFY username /PGFLQUO=2097152
UAF> MODIFY username /JTQUO=16384
UAF> MODIFY username /BYTLM=400000
UAF> MODIFY username /FILLM=4096

UAF> MODIFY username /TQELM=100
UAF> MODIFY username /ASTLM=300
UAF> MODIFY username /ENQLM=4000
UAF> MODIFY username /WSDEF=2048
UAF> MODIFY username /WSQUO=4098 4096
UAF> MODIFY username /WSEXTENT=16384
UAF> MODIFY username /DIOLM=150      { the normal default value }
UAF> MODIFY username /BIOLM=150      { the normal default value }

UAF> EXIT
$ LOGOUT
```

- In future WEBES versions, the Alpha quota requirements will become similar to the current Itanium quota requirements.
- On clusters with multiple system disks.... {no further changes}

- **LOCALHOST entry**—In order for WEBES to operate correctly, the LOCALHOST entry must be defined in the OpenVMS TCP/IP HOSTS database. It is defined correctly by default, but it can be removed, which causes WEBES to fail.

Enter the following command:

```
$ TCPIP SHOW HOST /LOCAL
```

Look for LOCALHOST, which should have an IP address of 127.0.0.1. If LOCALHOST does not appear in the list, enter the following command:

```
$ TCPIP SET HOST LOCALHOST /ADDRESS=127.0.0.1 /ALIAS=LOCALHOST
```

Enter a ping command to verify that LOCALHOST was added:

```
$ TCPIP PING LOCALHOST
PING LOCALHOST (127.0.0.1): 56 data bytes
64 bytes from 127.0.0.1: icmp_seq=0 ttl=64 time=0 ms
64 bytes from 127.0.0.1: icmp_seq=1 ttl=64 time=0 ms
64 bytes from 127.0.0.1: icmp_seq=1 ttl=64 time=0 ms
...
```

After verifying that LOCALHOST responds to the ping command, you can use Ctrl-C or Ctrl-Y to stop pinging.

- **System firmware**—The prerequisite system firmware supports the logging of events according to the FRU Table Version 5 Specification, which is required for WEBES FRU configuration tree processing.
 - All DSxx and ES40 systems must have firmware V5.7–4 or higher.
 - All other products supported by System Event Analyzer (see the *WEBES Release Notes*) shipped with a firmware version that is already compatible with WEBES/SEA processing.

In general, users should take advantage of the latest improvements by obtaining the most recent firmware version available for their platform.

- **Automated Notification**—If desired, you can choose a method for sending automatic problem reports to your service provider:
 - **ISEE**—For Instant Support Enterprise Edition (ISEE) automatic reports, you must install ISEE Client A.03.95 or later on the same machine as WEBES.
- You can upgrade to this version without first uninstalling a previous version yourself if the installed version is within 2 releases (versions) of this version of WEBES. This kit recognizes an existing installation, saves configuration and state data, uninstalls the existing kit, installs this version, and then restores the configuration and state data.

To install this version on a system that was running a version older than two releases, first uninstall the older version using the instructions in the *WEBES Installation Guide* for that version.

Installing on OpenVMS

5.1 Pre-Installation

5.1.1.1 OpenVMS Patches

WEBES v5.0 is fully supported on the following versions of OpenVMS:

- OpenVMS v7.3-2 (Alpha)
- OpenVMS v8.2 (Alpha)
- OpenVMS v8.3 (Alpha)
- OpenVMS v8.2-1 (Integrity)
- OpenVMS v8.3 (Integrity)

As of WEBES v4.4.3 support has been withdrawn for:

- OpenVMS v8.2 (ia64 / Integrity) – due to Java stability issues. Customers are advised to upgrade to OpenVMS v8.2-1 (Integrity) or later.

For WEBES to run at its best, you are suggested to install all the required OpenVMS patches (rated as INSTALL_1) for the WEBES version installed on your system. Any other patches that are required for your system (for example, XP1000 or DS20E) may also be installed. Prior to installation of patches, check the patch README files to verify whether any pre-requisite patches are required to install the specific patch.

You are also encouraged to install the latest of the following types of patches LIBRTL, PTHREADS, ACRTL, TCP/IP, TDF, and MANAGE patches (if any) that exist for your version of OpenVMS for the following reasons that may affect WEBES.

- LIBRTL--Solves stack, synchronization, and multithreading problems that WEBES could encounter
- PTHREADS--Solves DECthreads problems that WEBES could encounter
- ACRTL--Solves C Run-Time Library problems that the Java Runtime Environment within WEBES could encounter (the JRE calls C RTL functions)
- TCP/IP--Required by the Java Runtime Environment. As of this writing, no WEBES problems have been reported without the TCP/IP patches, but the latest patches are recommended because WEBES uses TCP/IP.
- Time Differential Factor (TDF)--Solves CPU usage issues related to Daylight Savings Time adjustments
- MANAGE--Solves SYSMAN privilege problems that can prevent WEBES from installing

Note

The latest UPDATE patch (if one exists for your OpenVMS version) includes a coherent set of the latest OpenVMS patches as of a certain date. A good strategy is first to install the latest UPDATE patch, followed by any other required patches listed above that were released after the latest UPDATE patch.

Installing on OpenVMS

5.1 Pre-Installation

Execute the following commands to first find out what OpenVMS version is running & then to list which patches are installed.

```
$ show sys/noproc
OpenVMS V7.3-2 on node NMKAS1 28-JUL-2005 17:32:48.54 Uptime 168
18:25:47
$
$
$ product show history vms732*
```

```
-----
PRODUCT                                KIT TYPE      OPERATION      DATE AND TIME
-----
DEC AXPVMS VMS732_DCL V1.0 Patch      Install 04-JUN-2004 15:27:50
DEC AXPVMS VMS732_MANAGE V1.0 Patch    Install 19-APR-2004 12:20:47
DEC AXPVMS VMS732_LAN V1.0 Patch       Install 19-APR-2004 12:12:17
DEC AXPVMS VMS732_FIBRE_SCSI V2.0 Patch Install 19-APR-2004 11:56:41
DEC AXPVMS VMS732_UPDATE V1.0 Patch    Install 19-APR-2004 11:30:33
DEC AXPVMS VMS732_PCSI V1.0 Patch      Install 07-APR-2004 18:40:36
-----
6 items found
```

Table 5-1 Patch List for WEBES v5.0 on OpenVMS v7.3-2 (Alpha)

OpenVMS v7.3-2 (Alpha)			
Patch Name	Dependencies	Reboot	Recommended/Mandatory
VMS732_ACRTL-v0300(1)	VMS732_PCSI-V0200 VMS732_TZ-V0100	Yes	Mandatory
VMS732_CPU270F-V0100 (1)	VMS732_PCSI-V0100 VMS732_UPDATE-V0300	Yes	Mandatory for AlphaServer ES47, ES80 & GS1280 systems
VMS732_FIBRE_SCSI-V0300 (1)	VMS732_PCSI-V0100	Yes	Mandatory
VMS732_FIBRE_SCSI-V0900 (1)	VMS732_PCSI-V0300 VMS732_UPDATE-V0600	Yes	Mandatory for AlphaServer DS10, DS20 & ES40 systems
VMS732_LIBRTL-V0100 (1)	VMS732_PCSI-V0100 VMS732_UPDATE-V0200	Yes	Mandatory
VMS732_MANAGE-V0500 (1)	VMS732_PCSI-V0100 VMS732_UPDATE-V0500	Yes	Mandatory for all OpenVMS Alpha clusters
VMS732_MP-V0100 (1)	VMS732_PCSI-V0300 VMS732_UPDATE-V0400	No	Mandatory
VMS732_MUP-V0100 (1)	VMS732_PCSI-V0100 VMS732_UPDATE-V0400	No	Mandatory
VMS732_PTHREAD-v0500 (1)	VMS732_PCSI-V0300 VMS732_UPDATE-V0600	No	Mandatory
VMS732_SYS-V1300	VMS732_PCSI-V0300 VMS732_UPDATE-V1100	Yes	Mandatory

Installing on OpenVMS

5.1 Pre-Installation

Table 5–1 Patch List for WEBES v5.0 on OpenVMS v7.3-2 (Alpha)

VMS732_CPU2308-v0100 (1)	VMS732_PCSI-V0300 VMS732_UPDATE-V0600	Yes	Recommended for AlphaServer GS160 systems
VMS732_LAN-V0300 (1)	VMS732_PCSI-V0100 VMS732_UPDATE-V0300	Yes	Recommended for AlphaServer DS25 systems & systems with DEGx Lan adaptors
VMS732_TDF-V0400 (1)	VMS732_PCSI-V0300 VMS732_UPDATE-V0700	No	Recommended for proper time handling
VMS732_TZ-V0300	VMS732_PCSI-V0300 VMS732_UPDATE-V0900	No	Recommended for proper time handling
TCPIP v5.4 ECO6	None	Yes	Recommended

Notes

These patches are included in patch kit VMS732_UPDATE-V1200. Therefore, it is recommended that VMS732_UPDATE-V1200 be installed using the patch install order below.

Table 5–2 Recommended Patch Installation Order OpenVMS v7.3-2

OpenVMS v7.3-2 (Alpha)			
Patch Name	Dependencies	Reboot	Recommended/Mandatory
VMS732_PCSI-V0300	None	No	Mandatory
VMS732_UPDATE-V1200	VMS732_PCSI-V0300	Yes	Mandatory
VMS732_SYS-V1300	VMS732_PCSI-V0300 VMS732_UPDATE-V1100	Yes	Mandatory
TCPIP v5.4 ECO6	None	Yes	Recommended

Table 5–3 Patch List for WEBES v5.0 on OpenVMS v8.2 (Alpha)

OpenVMS v8.2 (Alpha)			
Patch Name	Dependencies	Reboot	Recommended/Mandatory
VMS82_ACRTL-v0200(1)	VMS82A_PCSI-V0100 VMS82A_UPDATE-V0500	Yes	Mandatory
VMS82A_CLUSTER-V0100 (1)	VMS82A_PCSI-V0100 VMS82A_UPDATE-V0200	Yes	Mandatory for all OpenVMS Alpha clusters
VMS82A_MUP-V0100 (1)	None	No	Mandatory
VMS82A_PTHREAD-v0200 (1)	VMS82A_PCSI-V0100 VMS82A_UPDATE-V0500	Yes	Mandatory
VMS82A_SYS-V0600 (1)	VMS82A_PCSI-V0100 VMS82A_UPDATE-V0500	Yes	Mandatory
VMS82A_TDF-V0200 (1)	VMS82A_PCSI-V0100 VMS82A_UPDATE-V0300	Yes	Recommended for proper time handling
VMS82A_TZ-V0200	VMS82A_PCSI-V0100 VMS82A_UPDATE-V0500	No	Recommended for proper time handling
VMS82A_CPU2308-v0100 (1)	VMS82A_PCSI-V0100 VMS82A_UPDATE-V0200	Yes	Recommended for AlphaServer GS160 systems
VMS82A_DRIVER-V0100 (1)	None	Yes	Recommended for AlphaServer ES47, ES80 & GS1280 systems with Galaxy
VMS82A_FIBRE_SCSI-V0200	VMS82A_PCSI-V0100 VMS82A_UPDATE-V0200	Yes	Recommended for systems with KZPCA adaptors & / or Fibre attached storage
TCPIP v5.5 ECO2	None	Yes	Recommended

Notes

These patches are included in patch kit VMS82A_UPDATE-V0700. Therefore it is recommended that VMS82A_UPDATE-V0700 be installed, see recommended patch install order below.

Installing on OpenVMS

5.1 Pre-Installation

Table 5–4 Recommended Patch Installation Order OpenVMS v8.2 (Alpha)

OpenVMS v8.2 (Alpha)			
Patch Name	Dependencies	Reboot	Recommended/Mandatory
VMS82A_PCSI-V0100	None	No	Required for VMS82A_UPDATE-V0700
VMS82A_UPDATE-V0700	VMS82A_PCSI-V0100	Yes	Contains Mandatory patches
TCPIP v5.5 ECO2	None	Yes	Recommended

Table 5–5 Recommended Patch List OpenVMS v8.3 (Alpha)

OpenVMS v8.3 (Alpha)			
Patch Name	Dependencies	Reboot	Recommended/Mandatory
VMS83A_ACRTL-V0200	VMS83A_UPDATE-V0200	Yes	Mandatory
VMS83A_ERRFMT-V0100 (1)	None	No	Mandatory
VMS83A_FIBRE_SCSI-V0100	VMS83A_UPDATE-V0200	Yes	Recommended
VMS83A_TZ-V0100 (1)	None	No	Recommended for proper time handling
TCPIP v5.6 ECO1	None	Yes	Recommended

Note: These patches are included in patch kit VMS83A_UPDATE-V0300. Therefore it is recommended that VMS83A_UPDATE-V0300 be installed, see recommended patch install order below.

Table 5–6 Recommended Patch Installation Order OpenVMS v8.3 (Alpha)

OpenVMS v8.3 (Alpha)			
Patch Name	Dependencies	Reboot	Comments
VMS83A_UPDATE-V0300	None	Yes	Contains some mandatory / recommended patches

Installing on OpenVMS

5.1 Pre-Installation

Table 5–6 Recommended Patch Installation Order OpenVMS v8.3 (Alpha)

VMS83A_ACRTL-V0200	VMS83A_UPDATE-V0200	Yes	Mandatory
VMS83A_FIBRE_SCSI-V0100	VMS83A_UPDATE-V0200	Yes	Recommended
TCPIP v5.6 ECO1	None	Yes	Recommended

Table 5–7 Patch List for WEBES v5.0 on OpenVMS v8.2-1 (Integrity)

OpenVMS v8.2-1 (Integrity)			
Patch Name	Dependencies	Reboot	Mandatory / Recommended
VMS821I_ACRTL-V0100 (1)	None	Yes	Mandatory
VMS821I_FIBRE_SCSI-V0400	VMS821I_PCSI-V0100 VMS821I_UPDATE-V0600	Yes	Mandatory if using MSA1000 based storage
VMS821I_MUP-V0100 (1)	None	No	Mandatory
VMS821I_IPC-V0100 (1)	None	No	Mandatory
VMS821I_LIBRTL-V0100 (1)	None	Yes	Mandatory
VMS821I_PTHREAD-V0200 (1)	VMS821I_UPDATE-V0100 VMS821I_PCSI-V0100	No	Mandatory
VMS821I_CLUSTER-V0100 (1)	VMS821I_UPDATE-V0200 VMS821I_PCSI-V0100	Yes	Recommended for Integrity Clusters
VMS821I_FIBRE_SCSI-V0300	VMS821I_UPDATE-V0500 VMS821I_PCSI-V0100	Yes	Recommended
VMS821I_IPMI-V0100 (1)	None	Yes	Recommended for rx7620, rx8620 & Superdome
VMS821I_IVMSLOA-V0100 (1)	VMS821I_UPDATE-V0300 VMS821I_PCSI-V0100	No	Recommended for rx7620, rx8620 & sx1000 Superdome
VMS821I_LIBOTS-V0100 (1)	VMS821I_PCSI-V0100 VMS821I_UPDATE-V0600	No	Recommended
VMS821I_INSTAL-V0100 (1)	None	No	Recommended
VMS821I_TDF-V0300 (1)	VMS821I_PCSI-V0100 VMS821I_UPDATE-V0300	No	Recommended for proper time handling
VMS821I_TZ_V0100 (1)	VMS821I_UPDATE-V0200 VMS821I_PCSI-V0100	No	Recommended
TCPIP v5.5 ECO1	None	Yes	Recommended

Installing on OpenVMS

5.1 Pre-Installation

NOTES

This patch is included in patch kit VMS821I_UPDATE-V0700. Therefore, it is recommended that VMS821I_UPDATE-V0700 be installed. See recommended patch install order below.

All patches should be installed in the order listed in the table below.

Table 5–8 Recommended Patch Installation Order OpenVMS v8.2-1 (ia64)

OpenVMS v8.2-1 (Integrity)			
Patch Name	Dependencies	Reboot	Mandatory / Recommended
VMS821I_PCSI-V0100	None	No	Required for VMS821I_UPDATE-V0700
VMS821I_UPDATE-V0700	VMS821I_PCSI-V0100	Yes	Contains Mandatory Patches
VMS821I_FIBRE_SCSI-V0400	VMS821I_PCSI-V0100 VMS821I_UPDATE-V0600	Yes	Mandatory if using MSA1000 based storage
TCPIP v5.5 ECO1	None	Yes	Recommended

Table 5–9 Patch List for WEBES v5.0 on OpenVMS v8.3 (Integrity)

OpenVMS v8.3 (Integrity)			
Patch Name	Dependencies	Reboot	Mandatory / Recommended
VMS83I_ACRTL-V0200	VMS83I_UPDATE-V0200	Yes	Mandatory
VMS83I_ERRFMT-V0100 (1)	None	No	Mandatory
VMS83I_FIBRE_SCSI-V0300	None	YES	Mandatory for rx3600e & rx6600e systems
VMS83I_LAN-V0100	None	YES	Mandatory ONLY if using LAN card AD331 or AD332
VMS83I_LAN-V0400	VMS83I_UPDATE-V0200	YES	Mandatory ONLY if using LAN card AD193A
VMS83I_RX3600_RX6600-V0100 (1)	VMS83I_UPDATE-V0200	YES	Mandatory if using PCI-Express backplane in rx3600 or rx6600

Table 5–9 Patch List for WEBES v5.0 on OpenVMS v8.3 (Integrity)

OpenVMS v8.3 (Integrity)			
Patch Name	Dependencies	Reboot	Mandatory / Recommended
VMS83I_SYS-V0200	VMS83I_UPDATE-V0200 VMS83I_DCL-V0100 (1)	Yes	Mandatory
VMS83I_TZ-V0100 (1)	None	No	Recommended for correct time handling
TCPIP v5.6 ECO1	None	Yes	Recommended

NOTE

This patch is included in patch kit VMS83I_UPDATE-V0300. Therefore it is recommended that VMS83I_UPDATE-V0300 be installed, see recommended patch install order below.
All patches should be installed in the order listed in the table below

Table 5–10 Recommended Patch Installation Order OpenVMS v8.3 (Integrity)

OpenVMS v8.3 (Integrity)			
Patch Name	Dependencies	Reboot	Mandatory / Recommended
VMS83I_UPDATE-V0300	None	Yes	Contains Mandatory Patches
VMS83I_ACRTL-V0200	VMS83I_UPDATE-V0200	Yes	Mandatory
VMS83I_SYS-V0200	VMS83I_UPDATE-V0200 VMS83I_DCL-V0100 (1)	Yes	Mandatory
VMS83I_FIBRE_SCSI-V0400	VMS83I_FIBRE_SCSI-V0400	Yes	Mandatory if using MSA1000 based storage
TCPIP v5.6 ECO1	None	Yes	Recommended

5.1.2 WEBES on Integrity (Itanium) Servers

There are no functional differences between WEBES running on an HP Integrity server with the Intel Itanium chip, and WEBES running on an AlphaServer system.

Installing on OpenVMS

5.1 Pre-Installation

However, WEBES supplies two different installation kits, one for Alpha and one for Integrity. In a mixed cluster environment, install the Alpha kit while logged into one of the Alpha nodes, and select only the desired Alpha nodes on which to install WEBES during the install process. Once that is completed, install the Itanium kit while logged into one of the Itanium nodes, and select only the desired Itanium nodes on which to install WEBES during the install process. Do not select nodes of the wrong platform during either installation.

5.1.3 SEA System Requirements

In addition to the common WEBES prerequisites, your system must meet the following requirements before you install the SEA component. In clusters, minimum requirements apply to each node in the cluster:

- If you want SEA to automatically analyze a system's native error log, you must install on a supported HP hardware platform or a machine that includes supported HP I/O devices. See the *WEBES Release Notes* for the list of supported products.
- Minimum 36,000 blocks free
- Web browser—Table 5–11 describes the browser prerequisites for SEA according to the following categories:
 - Supported—fully tested
 - As-is—not officially tested but may work reasonably well
 - Unsupported—known not to work

Table 5–11 OpenVMS Browser Requirements

Category	VMS
Supported	HP Secure Web Browser (SWB) Version 1.2–1 or later (based on Mozilla)
As-Is	Mozilla, any HP version built from source code separately from the SWB
Unsupported	Netscape, any version

HP now provides a fully supported web browser for OpenVMS, the Secure Web Browser (SWB) for OpenVMS Alpha, based on Mozilla. The SWB is available for download at:

<http://h71000.www7.hp.com/openvms/products/ips/cswb/cswb.html>

Be sure to read the install documentation and release notes before using SWB for the SEA web interface.

Mozilla kits for OpenVMS can be downloaded at:

http://h71000.www7.hp.com/openvms/products/ips/cswb/cswb_source.html

Be sure to read the install documentation and release notes before using Mozilla for the SEA web interface. Also note that these Mozilla kits are later than the baseline for the SWB and are offered on an as-is basis only. The SWB is the preferred and fully supported browser for OpenVMS.

All web browsers for OpenVMS require a Java runtime environment to use the SEA web interface or to access any web site that uses Java. You have two options:

- (Preferred) Use the JRE embedded in WEBES.
- Install and use the Software Development Kit (SDK): JAVA150 V1.5-1 or later for OpenVMS, downloadable from the following web site:

<http://h18012.www1.hp.com/java/alpha/>

Special notes apply depending on which option you choose for accessing the SEA web interface.

WEBES JRE:

1. Initialize Java in your terminal session by executing the script:

```
$ @SVCTOOLS_HOME:[COMMON.JRE.LIB]JAVA$150_JRE_SETUP.COM
```

2. Launch the Web browser.

SDK Installed on the OpenVMS System:

1. Initialize Java as described in the SDK Release Notes.
For example, in SDK JAVA150 V1.5-1, use either of the following commands (command syntax differs for different SDK versions):

```
$ @SYS$COMMON:[JAVA$150.COM]JAVA$150_SETUP FAST ! Use the Fast VM
```

```
$ @SYS$COMMON:[JAVA$150.COM]JAVA$150_SETUP ! Use the Classic VM
```

2. Launch the web browser. Java functionality within the web browser should be identical for either initialization command above, but performance and memory usage may differ.

- Error log—After installation, SEA begins analyzing all events currently stored in the error log, which can result in high CPU usage over an extended period. To control this operation, you have two options:
 - Archive and clean the error log as described in Section 5.1.6 before installing. This reduces the size of the log and, in turn, the cost of the initial scan.
 - Choose to delay the initial scan when prompted during installation. Be aware that SEA automatic analysis does not run until after (and starting with) the initial scan, however.

Installing on OpenVMS

5.1 Pre-Installation

- System serial number—On GS80, GS160, and GS320 systems, verify the serial number according to Section 5.1.7 before installing.

See the SEA documentation for additional background on hardware, firmware, and operating system interoperability.

5.1.4 CCAT System Requirements

In addition to the common WEBES prerequisites, your system must meet the following requirements before you install the CCAT component. In clusters, minimum requirements apply to each node in the cluster:

- To run the CCAT GUI, DECwindows must be installed and configured and Motif or X-Window system terminals are required.
- Minimum 8,000 blocks free

5.1.5 Privileges

To install, upgrade, or uninstall WEBES, the user needs all of the following OpenVMS privileges:

ALTPRI	DIAGNOSE	SYSLCK
BUGCHK	IMPERSONATE	SYSPRV
BYPASS	NETMBX	TMPMBX
CMKRNL	OPER	

- When [Upgrading WEBES](#) as described in Section 5.4, the user who performs the upgrade must be the same user who originally installed the previous copy of WEBES.
- When [Uninstalling WEBES](#) as described in Section 5.5, the user who performs the uninstallation must be the same user who originally installed WEBES.

The SET PROCESS command sets privileges for *all* cluster nodes only when the cluster is served by a single system disk. However, on a cluster with multiple system disks, you might choose to install WEBES on nodes served by system disks other than the one serving the node from which you are installing. In that case, SET PROCESS does not set privileges on those other nodes (the nodes served by the other system disks), and WEBES does not install correctly on those other nodes.

To correctly install on clusters with multiple system disks, set up the required privileges as defaults (the privileges you get when logging in) on all nodes where you wish to install WEBES, instead of using the SET PROCESS command.

See Section 5.1.9, [Shared Non-System Disk Installations](#), for additional precautions related to one versus multiple system disks.

Running WEBES

To execute any WEBES commands (DESTA, WSEA, or WCCAT commands), the user needs all of the following OpenVMS privileges. Note that these are a subset of the privileges required to install, upgrade, or uninstall WEBES:

ALTPRI	DIAGNOSE	SYSPRV
BUGCHK	IMPERSONATE	TMPMBX
CMKRNL	NETMBX	

5.1.6 Archiving and Cleaning the Error Log

(Required only when installing the SEA component)

Follow these guidelines for cleaning the error log. If WEBES is installed and running when you clean the log, you do not need to stop and restart the Director process. Also, do not stop and restart the ERRFMT system event logging process.

The default error log, typically SYSSYSROOT:[SYSERR]ERRLOG.SYS, increases in size and remains on the system disk until you explicitly rename or delete it. When you do either, the system creates a new, clean error log file after about 15 minutes.

Caution

After renaming or deleting the existing log, do not install WEBES until the new default log is present.

Note that if you rename the log, the saved log can be analyzed at a later time.

Scheduled Maintenance

Aside from starting with a clean log before installing SEA, you may want to perform regular maintenance on the error log. One method is to rename ERRLOG.SYS on a daily basis. For example, you might rename ERRLOG.SYS to ERRLOG.OLD every morning at 9:00. To free space on the system disk, you then can back up the renamed version to a different volume and delete the file from the system disk.

5.1.7 Verifying the Serial Number

(Required only for some GS80, GS160, and GS320 systems with SEA component)

Installing on OpenVMS

5.1 Pre-Installation

Certain GS80, GS160, and GS320 systems did not have their system serial number set correctly at the factory, and SEA rules only function when the serial number is set correctly. Affected serial numbers will begin with the letter “G.”

At the SRM console firmware prompt (the prompt when you first power the system on), check the serial number with the following command:

```
>>> show sys_serial_num
```

The serial number shown should match the actual serial number on the model/serial number tag located in the power cabinet. If necessary, change the serial number with the following command:

```
>>> set sys_serial_num
```

Enter the six-character serial number provided on the tag in the power cabinet.

Multiple AlphaServers

This issue also can arise when multiple AlphaServers are ordered, because the factory may assign an identical serial number to each system. In this scenario, SEA rules do not work correctly because they require that each AlphaServer have a unique number.

If this is the case, uniquely identify each AlphaServer by appending –1, –2, –3, and so on, to the serial numbers when you use the set sys_serial_num command.

Partitions

Note that multiple partitions on the same AlphaServer always have the same serial number because they reside on the same machine. There are no SEA conflicts in this case, so do not attempt to assign unique serial numbers to different partitions on the same machine.

5.1.8 Cluster Node Access to Install Directory

The kit only can install itself on cluster nodes that have access to the target directory where you choose to install WEBES. Another way to explain this is that the nodes must mount the disk containing the target directory. This means that an installation might not always place WEBES on all cluster nodes, since all nodes might not be able to “see” the place where you are installing WEBES.

Following are three scenarios that illustrate this issue:

- **CLUSTER:** All nodes share the same system disk.
INSTALL NODE: Any node
INSTALL TARGET: The default location SYS\$COMMON:[HP...]
RESULT: WEBES installs itself for all nodes.

- **CLUSTER:** All but two nodes share system disk A. The other two nodes share system disk B.
INSTALL NODE: A node that uses system disk A
INSTALL TARGET: The default location SYS\$COMMON:[HP...]
RESULT: The other two nodes will not have WEBES.

In the previous case, you can install WEBES one more time for the remaining two nodes by running the install from either node and again choosing the default location of SYS\$COMMON:[HP...]. Consider this a completely separate WEBES installation from the first install on the majority of the nodes.

- **CLUSTER:** All but two nodes share system disk A. The other two nodes share system disk B. All nodes also mount a non-system disk C.
INSTALL NODE: Any node
INSTALL TARGET: A directory on disk C, specified by you during the installation
RESULT: WEBES installs itself for all nodes.

Note that in all cases the kit also lets you choose only a subset of the nodes that *can* see the install location.

5.1.9 Shared Non-System Disk Installations

An OpenVMS cluster can contain nodes that are served by a single common system disk, or nodes that are served by multiple system disks. Any given node is served by only one system disk, but a system disk can serve one or more nodes. Each system disk contains its own PCSI database (product registry).

As explained in Section 5.1.8, WEBES can be installed on a system disk or shared non-system disk. However, a shared non-system disk might be accessible by multiple nodes that are served by different system disks as shown in Figure 5-1. This means that WEBES is not limited to being installed only on nodes served by one given system disk. A PCSI database, however, is limited to one system disk.

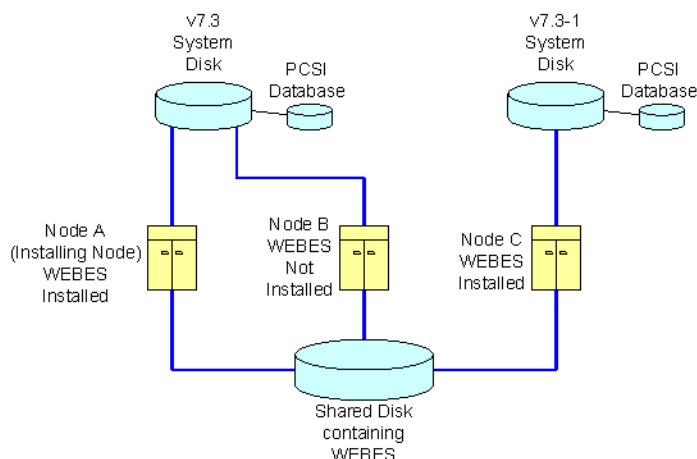
This scenario can generate discrepancies in the PRODUCT SHOW PRODUCT WEBES command. The command always shows WEBES as installed when run from a node served by the same system disk as the node from which WEBES was originally installed (the installing node). This is because the WEBES installer registers WEBES only into the PCSI database for the system disk serving the installing node, and not into any other PCSI databases. Two types of misleading information can result as shown in Figure 5-1.

- If a node is served by the same system disk as the installing node, but the user did not add WEBES to that node, the command shows that WEBES is installed when it is not.
- Conversely, if a node is served by a different system disk from the installing node, and the user added WEBES to that node, the command does not show that WEBES is installed when it is.

Installing on OpenVMS

5.1 Pre-Installation

Figure 5-1 Shared Non-System Disk Installation



Scenario:

- User installs WEBES from node A.
- WEBES registers itself in the v7.3 System Disk PCSI database.
- User chooses to place WEBES on shared disk that all nodes can access.
- User chooses to add WEBES to nodes A and C, but not B.

PRODUCT SHOW PRODUCT command:

- On node A, says WEBES is installed (and it is).
- On node B, says WEBES is installed (but it is not).
- On node C, says WEBES is not installed (but it is).

5.1.10 Extracting the Installation Kit

To extract the WEBES installation kit, place the .EXE executable file in a directory, where:

- There are no other kits in the directory, especially other versions of WEBES kits.
- There are no old WEBES or WCC files in the directory that were left over from previous operations. (The most reliable course may simply be to use an empty directory.)

Then, enter the following command:

```
$ run WEBES_{version}.EXE
```

This command extracts the WEBES installation files. Messages similar to the following appear:

```
UnZipSFX 5.32 of 3 November 1997, by Info-ZIP (Zip-Bugs@lists.wku.edu)
```

```
*****
```

```
WEBES Kit
```

```
WEBES <version> for OpenVMS Alpha. 20-Mar-2002
```

```
*****
```

```
inflating: dec-axpvms-webes-<version>.pcsi
inflating: dec-axpvms-sea-<version>.pcsi
inflating: dec-axpvms-ccat-<version>.pcsi
inflating: webes_install.com
```


5.2 Installing WEBES

(The procedure in this section is applicable when WEBES is already uninstalled or was never installed at all. If you are upgrading to WEBES 4.5 from v4.4.4 or v4.4.3 (the 2 previous versions), see Section 5.4, [Upgrading WEBES](#). Upgrading lets you preserve your configuration and state data.)

After all [Pre-Installation](#) instructions are met, run the following command and follow the prompts. The command executes the DCL script WEBES_INSTALL.COM in the current directory. Section 5.1.10 provides information about extracting the script.

Note

If you have installed any pre-release build of any version of WEBES, and you wish to replace it with the official final kit build of the same version, you must uninstall the existing WEBES installation before installing the final kit. Do not attempt to install the later kit without first uninstalling the earlier kit. Upgrades from one WEBES version to another version within two version numbers are supported, but you cannot upgrade from one build to another build of the same WEBES version.

Do not run the PRODUCT INSTALL WEBES command used in some older WEBES releases. This command aborts and prompts you to run the WEBES_INSTALL script instead. As of version 4.1, the installation uses the WEBES_INSTALL DCL script.

Set your default directory to the one containing the file webes_install.com, created by extracting the WEBES .exe file in the previous step. Then execute the DCL script:

```
$ @webes_install
```

Alternatively, if you have encountered installation problems with WEBES in the past, WEBES support can help you if you capture the output of the installation in debug mode. To install WEBES this way:

1. Set your terminal window to save 5,000 lines or more, because the additional debugging output will be lengthy. Alternatively, use the following command to capture the entire session:

```
$ set host {hostname} /log=webes_install_{hostname}.log
```
2. Go to the directory to which you have expanded the WEBES executable kit file. Install WEBES using the debug qualifier:

```
$ @webes_install debug
```
3. After the installation has finished, if you used the "set host" command above, log out to close the log file. Your terminal session output will be captured in webes_install_{hostname}.log in your current directory.
4. Forward the log of this install attempt to WEBES support for investigation, if errors are shown.

Installing on OpenVMS

5.2 Installing WEBES

- **OpenVMS Patch Removal Feature**—During WEBES installation, you may see messages similar to the following:

```
The following product has been selected:
    DEC AXPVMS WEBES V4.3-2                Platform (product suite)

Information has been saved to allow you to uninstall the following
patches:

RECOVERY DATA SET 001 created 25-JUL-2003 00:06:16.52
-----
    PATCH                                APPLIED TO
-----
    DEC AXPVMS VMS731_LAN V6.0          DEC AXPVMS VMS V7.3-1
-----

* If you continue, recovery data for the patches listed above will be
deleted.
* The deletion of recovery data does not affect the installation status
of
* patches applied to products that are not participating in this
operation.
* However, continuing with this operation prevents you from uninstalling
* these patches at a future time by use of the PRODUCT UNDO PATCH command.

Do you want to continue? [NO] YES
```

The messages appear because of a new feature that allows OpenVMS patches to be removed. You only see these messages if you have installed the new OpenVMS PCSI patch that adds the feature, and you have installed OpenVMS patches that use the feature.

Prior to the addition of this feature, OpenVMS patches could not be removed. Nevertheless, note that installing WEBES will prevent you from using the new feature to remove any OpenVMS patches listed. Otherwise, you can safely ignore the messages and continue with WEBES installation.

- **Install Menu**—The main install menu lets you choose some or all of the WEBES tools for installation.

```
WEBES INSTALL - MAIN MENU
=====

Mandatory Component: WEBES

Optional Components:
  1. Mandatory Component Only
  2. System Event Analyzer ( SEA )
  3. Computer Crash Analysis Tool ( CCAT )
  4. All of the Mandatory and Optional Components
  5. Exit
=====
```

- **Install Directory**—The default install directory is SYS\$COMMON, but the install routine prompts you so that you can change it if desired.
- **Clusters**—In clusters, the installation asks whether you also want to install WEBES on each of the other nodes in the cluster. Make sure that nodes in the cluster can access the install directory.

- **Customer and System Information**—Table 5–12 presents the customer and system information that you are asked during installation.

Table 5–12 WEBES Information Required During Installation

Question	Example	Notes
Customer name	Chris Green	
Customer phone	123-456-7890	
Company name	XYZ Company	
Customer email address	chris.green@xyz.com	
DSNLink notification email	chris.green@xyz.com	DSNLink reply mail will be sent to this address.
SMTP mail server	mailsys.xyz.com	The server that handles SMTP mail at your site
Company street address	123 Main Street	
Company city	Metropolis	
Company state and zip	VA 22222	
Primary Contact	Chris Green	
Secondary Contact	Pat Brown	
System name	MGDSYS	In clusters, asked only for the current node
System type	Type 1	In clusters, asked only for the current node
System serial number	A01234567890	In clusters, asked only for the current node
System IP address	12.34.56.78	In clusters, asked only for the current node

In addition to the customer and system data, WEBES requires you to supply the service obligation information described in Table 5–13.

Table 5–13 Service Obligation Information Required for WEBES

Question	Example	Notes
Service provider name	Hewlett-Packard	

Installing on OpenVMS

5.2 Installing WEBES

Table 5-13 Service Obligation Information Required for WEBES (continued)

Question	Example	Notes
System serial number	A01234567890	In clusters, asked only for the current node
Service obligation number	A01234567890	The default is usually the system serial number.
Service obligation start date	20-Feb-2002	The default is usually the current date.

5.2.1 Installing SEA

To install mandatory component and SEA , select option 2 from the WEBES Install Main menu.

If you have the ISEE Client installed, it will be enabled by default as one of the notification types.

Delaying the Initial SEA Scan—Immediately after installation, SEA normally scans all events currently stored in the error log. For a very full log, this initial scan can result in high CPU usage over an extended period. You can choose to delay the initial scan when prompted, but SEA automatic analysis does not run until after (and starting with) the initial scan. Note that events that happen during the delay are saved in the log for analysis at initial scan time.

5.2.2 Installing CCAT

To install mandatory component and CCAT , select option 3 from the WEBES Install Main menu.

Follow the prompts that appear while installing CCAT.

Note

To install all the components, select option 4 from the WEBES Install Main Menu.

5.2.3 Finishing the WEBES Installation

After installing any components, the WEBES installation completes and displays the following message:

To change or remove the installed tools anytime in the future, or to change the configuration, issue the command:
`@SVCTOOLS_HOME:[COMMON.BIN]WEBES_INSTALL`

After the message appears, you are returned to the command prompt.

5.3 Post-Installation

Be aware of the following post-installation procedures.

- [5.3.1 Adding and Removing a Cluster Node](#)
- [5.3.2 Correcting Node Data in Clusters](#)
- [5.3.3 Configuration Options](#)
- [5.3.4 Determining Which Tools are Installed](#)
- [5.3.5 Determining Which Versions are Installed](#)
- [5.3.6 Storing User Files](#)
- [5.3.7 Timestamp Adjustments](#)
- [5.3.8 Alternate Boot Start and Stop Methods](#)

5.3.1 Adding and Removing a Cluster Node

5.3.1.1 Adding a Cluster Node to WEBES

This procedure applies whenever you add a new node to a cluster after WEBES was installed, or when one or more nodes were down during WEBES installation.

To add WEBES to the new cluster node or nodes, enter the following command:

```
$ @wccproxy_home:[common.wccproxy.bin]wccproxycluster install <nodename>  
$ @svctools_home:[common.bin]webescluster install  
  <comma_separated_node_list>
```

WEBES will be configured on the new nodes in the same way the other nodes were configured at the time of original WEBES installation.

5.3.2 Correcting Node Data in Clusters

In clusters, the install node's configuration data propagates to the other nodes in the cluster. To correct this issue, rerun the install command on the other nodes in the cluster:

```
$ @svctools_home:[common.bin]webes_install
```

Installing on OpenVMS

5.3 Post-Installation

Use the WEBES update menu to enter customized values (such as option 6. System Information, and option 7. Service Obligation) that apply to the given node.

WEBES engineering expects to correct this issue in a future release.

Special Case for Separate System Disks

The previous recommendation works only if you install on a cluster where all nodes share the same system disk. If you install on a cluster-shared disk, but each node has a separate system disk, then WEBES_INSTALL thinks WEBES is not installed and tries to start an installation. (It works correctly on the node from which you installed WEBES, but that node already has the desired configuration data.)

Instead of running WEBES_INSTALL on each node, the workarounds for the WEBES_INSTALL options are as follows:

- Options 1–2: SEA and CCAT menus

Run these only from the installing node. These options do not involve correcting node data.

- Option 3: Start at Boot Time

To see if WEBES processes are set to start on boot:

```
$ MCR SYSMAN STARTUP SHOW FILE
```

To turn off boot time startup, where *{hostname}* is the name of the machine:

```
$ MCR SYSMAN STARTUP REMOVE FILE CCAT$STARTUP.COM
$ MCR SYSMAN STARTUP REMOVE FILE/PHASE=LPMAIN DESTA$STARTUP.COM
$ MCR SYSMAN STARTUP ADD FILE/PHASE=LPMAIN DESTA_LOGICALS$STARTUP.COM
```

To turn on boot time startup, where *{hostname}* is the name of the machine:

```
$ MCR SYSMAN STARTUP ADD FILE CCAT$STARTUP.COM
$ MCR SYSMAN STARTUP ADD FILE/PHASE=LPMAIN DESTA$STARTUP.COM
$ MCR SYSMAN STARTUP REMOVE FILE/PHASE=LPMAIN DESTA_LOGICALS$STARTUP.COM
```

- Option 4: Customer Information (This probably does not change per node.)

In the following file, manually edit the fields that do not start with “System ____” :
SVCTOOLS_HOME:[SPECIFIC.DESTA.CONFIG]PROFILE.TXT

In the following file, manually edit customer information as needed:
SVCTOOLS_HOME:[SPECIFIC.DESTA.CONFIG]DESTA.REG

- Option 5: System Information

In the following file, manually edit the “System ____” fields:
SVCTOOLS_HOME:[SPECIFIC.DESTA.CONFIG]PROFILE.TXT

In the following file, manually edit the “common.SystemSerialNumber=” field:
SVCTOOLS_HOME:[SPECIFIC.DESTA.CONFIG]DESTA.REG

- Option 6: Service Obligation

Instead, run the following command and enter new values.

```
$ desta servob install
```

- Options 7–8: Start/Stop Director

Instead, run the commands:

```
$ desta start  
$ desta stop
```

- Option 9: Uninstall

Run this option only from the installing node. This option does not involve correcting node data.

5.3.3 Configuration Options

Any time after initial installation, you can rerun the install command:

```
$ @svctools_home:[common.bin]webes_install
```

When WEBES is already installed, the command launches the update menu:

```
WEBES UPDATE - MAIN MENU  
=====
```

1. SEA Menu
2. CCAT Menu
3. Start At Boot Time
4. Customer Information
5. System Information
6. Service Obligation
7. Start DESTA Director
8. Stop DESTA Director
9. Uninstall Webes
 - Fully uninstalls Webes and all installed dependent components
such as SEA and CCAT
10. Exit

```
=====
```

Selections requiring that the WEBES Director process first be stopped (for example, for tool installation) automatically stop the Director and then restart it during the interactive routine. Table 5–14 describes each option:

Installing on OpenVMS

5.3 Post-Installation

Table 5–14 Configuration Options

Selection	Description
SEA Menu	Installs or removes the SEA tool
CCAT Menu	Installs or removes the CCAT tool
Start at Boot Time	Specifies whether to automatically start the WEBES Director process whenever the system starts (in clusters, selectable for each node)
Customer Information	Allows you to confirm or modify the customer data entered during installation. In clusters, different customer information can be applied to each node.
System Information	Allows you to confirm or modify the system data entered during installation. In clusters, different system information can be applied to each node.
Service Obligation	Allows you to confirm or modify the service obligation data entered during installation. In clusters, different service obligation information can be applied to each node.
Start DESTA Director	Manually starts the WEBES Director process (in clusters, selectable for each node)
Stop DESTA Director	Manually stops the WEBES Director process (in clusters, selectable for each node)
Uninstall WEBES	Removes all WEBES components and tools
Exit	Returns to the operating system prompt

Note that there are workarounds for WEBES_INSTALL in clusters where you install on a cluster-shared disk, but each node has a separate system disk. See the [Special Case for Separate System Disks](#) in Section 5.3.2 instead of running WEBES_INSTALL.

5.3.4 Determining Which Tools are Installed

On any system that you are unsure about, you can determine what parts of WEBES are installed as follows.

WEBES—The WEBES base kit is installed if issuing the following command generates output similar to the following:

```
$ product show product webes
```

PRODUCT	KIT TYPE	STATE
HP I64VMS WEBES V4.5	Platform	Installed

SEA—SEA is installed if issuing the following command generates output similar to the following:

```
$ product show product sea
```

PRODUCT	KIT TYPE	STATE
HP I64VMS SEA V4.5	Full LP	Installed

CCAT—CCAT is installed if issuing the following command generates output similar to the following:

```
$ product show product ccat
```

PRODUCT	KIT TYPE	STATE
HP I64VMS CCAT V5.2	Full LP	Installed

WCCProxy—WCCProxy is installed if issuing the following command generates output similar to the following:

```
$ product show product wccproxy
```

PRODUCT	KIT TYPE	STATE
HP I64VMS WCCPROXY V1.4	Full LP	Installed

In general, you do not need to keep track of any build number that follows the base version number. Subsequent dot releases may affect the build number.

Special Case for Separate System Disks

The previous steps work only if you install on a cluster where all nodes share the same system disk. If you install on a cluster-shared disk, but each node has a separate system disk, you only see the correct PRODUCT SHOW output on the node where WEBES was originally installed. All the other nodes do not show WEBES nor any of its component tools as installed.

You can see what original node WEBES was installed from by looking at the following line in SVCTOOLS_HOME:[SPECIFIC.DESTA.CONFIG]PROFILE.TXT on any node (unless someone already edited the file as described in the workarounds in Section 5.3.2):

```
System name is NODENAME
```

If someone already edited the PROFILE.TXT file for each node, use the following method to see where WEBES was installed from:

```
$ MCR SYSMAN
SYSMAN> set env /cluster
```

```
SYSMAN> do product show product webes
```

This runs the `PRODUCT ...` command on each node and displays its output. One of the nodes will show `WEBES` as installed, which is the original node.

5.3.5 Determining Which Versions are Installed

To determine what versions of `WEBES` and its component tools are installed, open and read the text files shown in Table 5–15.

Table 5–15 Determining WEBES and Tool Versions

Tool	File for Version Information
WEBES Overall Kit	SVCTOOLS_HOME:[COMMON.WEBES]RELEASE.TXT
WEBES Common Components (WCC)	SVCTOOLS_HOME:[COMMON.DESTA]RELEASE.TXT
WCCProxy	SVCTOOLS_HOME:[COMMON.DESTA]RELEASE.TXT
SEA	SVCTOOLS_HOME:[COMMON.SEA]RELEASE.TXT
CCAT	SVCTOOLS_HOME:[COMMON.CCAT]RELEASE.TXT

The `WEBES` readme file lists the component versions for the release. Generally, they match the overall `WEBES` version number. The files in Table 5–15 also may reveal a “build” number, but they are not intended to match across components.

5.3.6 Storing User Files

`WEBES` includes “userdata” subdirectories under the `WEBES` `svctools` directory tree as follows:

```
SVCTOOLS_HOME:[COMMON.CA.USERDATA]
SVCTOOLS_HOME:[COMMON.CCAT.USERDATA]
SVCTOOLS_HOME:[COMMON.DESTA.USERDATA]
SVCTOOLS_HOME:[COMMON.WEBES.USERDATA]

SVCTOOLS_HOME:[SPECIFIC.CA.USERDATA]
SVCTOOLS_HOME:[SPECIFIC.CCAT.USERDATA]
SVCTOOLS_HOME:[SPECIFIC.DESTA.USERDATA]
SVCTOOLS_HOME:[SPECIFIC.WEBES.USERDATA]
```

When using `WEBES`, store your own files (such as binary event logs or `CCAT` crash dump files) under these subdirectories.

- Storing files under the userdata subdirectories makes them easily accessible in the WEBES user interfaces. For example, SEA automatically lists any binary event logs from the CA.USERDATA subdirectories under Other Logs.
- In WEBES 4.1 or later, files stored under the userdata subdirectories are preserved and restored during WEBES uninstallations and reinstallations.

On clusters, place files that you want to be accessible by all nodes into the “common” paths, and files that are only for one node under the “specific” paths.

5.3.7 Timestamp Adjustments

In some cases, you may see a discrepancy in the timestamps among the event, report, and expiration times when using WEBES:

```
Event Time:      Wed 1 Oct 2003 10:39:00 GMT-05:00
Report Time:     Wed 1 Oct 2003 11:39:00 GMT-04:00
Expiration Time: Wed 1 Oct 2003 10:39:00 GMT-05:00
```

This can occur when, for example, OpenVMS is writing times into the logfile in standard time, while the Java time zone information utilities are correctly adjusting for daylight savings based on the date.

To address such discrepancies, look at time settings by checking logicals as shown in the following example:

```
$ show logical *time*

(LNM$SYSTEM_TABLE)

"SYS$DST_DELTA_TIME" = "ffffcaccfb390af"
"SYS$LOCALTIME" = "SYS$SYSROOT:[SYS$ZONEINFO.SYSTEM.US]MOUNTAIN."
"SYS$TIMEZONE_DAYLIGHT_SAVING" = "1"
"SYS$TIMEZONE_DIFFERENTIAL" = "-21600"
"SYS$TIMEZONE_NAME" = "MDT"
"SYS$TIMEZONE_RULE" = "MST7MDT6,M4.1.0/02,M10.4.0/02"
```

Adjust any settings that are incorrect for your location. You may want to make this verification step part of your regular post-installation tasks.

5.3.8 Alternate Boot Start and Stop Methods

Normally, installing WEBES sets up VMS system logicals required for proper WEBES operation, and optionally sets up the WCCProxy and DESTA Director processes to start shortly after booting, and to shut down as part of the site-specific shutdown process. The WEBES installer uses the VMS facility “MCR SYSMAN STARTUP” for this setup.

The kit asks the following question during installation:

```
DESTA$STARTUP and DESTA$SHUTDOWN will be added to system startup and
shutdown procedures, by default. Answering NO will add
```

Installing on OpenVMS

5.3 Post-Installation

```
DESTA_LOGICALS$STARTUP for defining of ONLY LOGICALS, but will not start
the DESTA Director during reboot.
Do you want to add? [YES]
```

If you answer YES, WEBES puts the entries below into the MCR SYSMAN STARTUP table, to do the following:

- Define the logicals
- Start the WCCProxy 5 minutes after the WCCPROXY\$STARTUP is called
- Start the DESTA Director 5 minutes after the DESTA\$STARTUP is called
- (If you chose to install CCAT) Start CCAT shortly after the DESTA Director has started (to look for crash dumps to analyze)

Phase	Mode	File
LPMAIN	DIRECT	WCCPROXY\$STARTUP.COM
LPMAIN	DIRECT	DESTA\$STARTUP.COM
LPMAIN	DIRECT	CCAT\$STARTUP.COM

In addition, the following line is appended to the system SYSHUTDWN.COM file:

```
$ IF F$SEARCH("SYS$STARTUP:DESTA$SHUTDOWN.COM") .NES. "" THEN
@SYS$STARTUP:DESTA$SHUTDOWN.COM
```

If you answer NO, then WEBES asks the following question:

```
Would you like the WEBES logicals and DCL commands to be defined during
VMS system reboot? (Adds startup entries to MCR SYSMAN STARTUP, but these
entries do not start any processes)
```

```
Do you want to add? [YES]
```

If you answer YES, WEBES puts the entries below in the MCR SYSMAN STARTUP table, to do the following:

- Define the logicals
- Start the WCCProxy 5 minutes after the WCCPROXY\$STARTUP is called (the ISEE Client product needs the WCCProxy part of WEBES to be running at all times, even if the DESTA Director is not running)

Phase	Mode	File
LPMAIN	DIRECT	DESTA_LOGICALS\$STARTUP.COM
LPMAIN	DIRECT	WCCPROXY\$STARTUP.COM

The system SYSHUTDWN.COM file is left untouched.

If you answer NO to the above question, WEBES puts the entries below in the MCR SYSMAN STARTUP table, to do the following:

- Start the WCCProxy 5 minutes after the WCCPROXY\$STARTUP is called (the ISEE Client product needs the WCCProxy part of WEBES to be running at all times, even if the DESTA Director is not running).

Phase	Mode	File
-----	-----	-----
LPMAIN	DIRECT	WCCPROXY\$STARTUP.COM

The system SYSHUTDOWN.COM file is left untouched.

Next, WEBES asks if you wish to start the DESTA Director during installation. If you answer YES, the Director will be started at the end of the WEBES installation process. If you answer NO, the Director will not be started by the installation process, and you must start it yourself if required. The WCCProxy is started however.

Controlling the Startup Sequence Yourself

If you wish to control the setup of WEBES in the startup sequence yourself, you can instead do the following:

Option A:—If you want the DESTA Director to start at boot time:

1. Answer “YES” to the “Would you like the WEBES Director to be started during VMS system boot?” question during the WEBES install.
2. Remove the entries added by the WEBES install:

```
$ MCR SYSMAN STARTUP REMOVE FILE WCCPROXY$STARTUP.COM
$ MCR SYSMAN STARTUP REMOVE FILE DESTA$STARTUP.COM
$ MCR SYSMAN STARTUP REMOVE FILE CCAT$STARTUP.COM
```

(The last line applies only if CCAT was installed.)

3. Add these calls to your system startup, anytime after TCP/IP has been started, in any order:

```
$ @SYS$STARTUP:WCCPROXY$STARTUP
$ @SYS$STARTUP:DESTA$STARTUP.COM
$ @SYS$STARTUP:CCAT$STARTUP.COM
```

(The last line applies only if CCAT was installed.)

4. Examine the DESTA line appended to the SYSHUTDOWN.COM, and move it if desired.

Option B: If you do not want the DESTA Director to start at boot time, but you want to be able to run WEBES processes manually, including the DCL commands DESTA, WSEA, and WCCPROXY (such as “desta start” to start the Director later manually):

1. Answer “NO” to the “Would you like the WEBES Director to be started during VMS system boot?” and “Would you like the WEBES logicals and DCL commands to be defined during VMS system reboot” questions during the WEBES install.
2. Remove the entry added by the WEBES install:

```
$ MCR SYSMAN STARTUP REMOVE FILE WCCPROXY$STARTUP.COM
```

3. Add these calls to your system startup, anytime after TCP/IP has been started, in any order:

```
$ @SYS$STARTUP:WCCPROXY$STARTUP "LOGICALS ONLY"
$ @SYS$STARTUP:DESTA_LOGICALS$STARTUP.COM
```

Installing on OpenVMS

5.3 Post-Installation

Note the required quoted parameter to WCCPROXY\$STARTUP, which will prevent starting the WCCProxy process after setting up the WCCProxy system logicals.

If you have the ISEE Client installed, it requires the WCCProxy process to be running at all times. In that case, remove the “LOGICALS ONLY” parameter to allow the WCCProxy process to start:

```
$ @SYS$STARTUP:WCCPROXY$STARTUP
$ @SYS$STARTUP:DESTA_LOGICALS$STARTUP.COM
```

4. The DESTA Director must be stopped before shutting down the VMS system, to ensure a clean closure of files, sockets, processes and other resources. You can stop it either manually with the “desta stop” command, or add it to your shutdown sequence as described below.

Even if you do not start the Director at boot time, it is recommended that you add the line shown below to your site-specific system shutdown sequence (such as SYSHUTDWN.COM) to ensure that any DESTA Director started manually is stopped correctly during system shutdown:

```
$ IF F$SEARCH("SYS$STARTUP:DESTA$SHUTDOWN.COM") .NES. "" THEN
@SYS$STARTUP:DESTA$SHUTDOWN.COM
```

Or simply:

```
$ @SYS$STARTUP:DESTA$SHUTDOWN.COM
```

(The simplified line will cause an error message if it remains after WEBES has been removed or uninstalled.)

Option C: If you do not want the DESTA Director to start at boot time, and you do not want to be able to run any WEBES processes without manually setting up WEBES first:

The process is the same as in Option B, skipping step 3 (1 and 2 are still required, and 4 is recommended). No WEBES DCL commands will operate correctly until a user with the required WEBES runtime privileges (see Section 5.1.5) issues both of the commands listed in step 3.

Manually Remove SYSMAN Entry After Upgrading

If you upgrade WEBES to a newer version after manually removing the entries from SYSMAN, the upgrade places the WCCPROXY entry in SYSMAN. (This will be corrected in a future WEBES release.) If you are already handling WEBES setup using one of the above options (A, B, or C), then you must manually remove the SYSMAN entry inserted by the upgrade, after the upgrade has completed:

```
$ MCR SYSMAN STARTUP REMOVE FILE WCCPROXY$STARTUP.COM
```

5.4 Upgrading WEBES

Note

Before upgrading WEBES, reinitialize the system error log as described in Section 5.1.6, [Archiving and Cleaning the Error Log](#).

Upgrade is NOT possible if the existing WEBES version is on ODS-2 disk. You will have to remove the old WEBES and then install WEBES v4.5.1 on an ODS-5 disk. See Section [Uninstalling WEBES](#) for procedure to remove WEBES.

Direct upgrade to WEBES v4.5.1 is possible only if your old WEBES happens to be on an ODS-5 disk, and it is one of the 2 previous versions (v4.4.2 or v4.4.3 for OpenVMS Alpha, v4.4.4 or v4.5 for OpenVMS Integrity).

If WEBES is already uninstalled or was never installed at all, see Section 5.2, [Installing WEBES](#).

Upgrading lets you preserve your configuration and state data. Be aware that upgrading uninstalls the other version of WEBES and installs the newer version—the upgrade does not simply patch or replace certain files, as was the case with WEBES Service Packs.

In clusters, follow these guidelines:

- Upgrade by running the WEBES installer
 # @WEBES_INSTALL (from the directory where the 4.5.1 kit is present) only on the same cluster node from which you originally installed WEBES.
- The node WEBES was installed from is the only one where the system logical WEBES\$ROOT is defined. You can determine which node as follows:

```
$ MCR SYSMAN
SYSMAN> SET ENV /CLUSTER
SYSMAN> DO SHOW LOGICAL WEBES$ROOT
SYSMAN> EXIT
```

Whenever a version of WEBES is already installed that is capable of being upgraded, the WEBES installer

#@WEBES_INSTALL (from the directory where the 4.5.1 kit is present) informs you that the other version was detected and prompts you about upgrading:

```
WEBES V4.4.4 is currently installed.
Do you wish to upgrade to WEBES V4.5.1?[YES]:
```

If you answer **Yes**, the kit saves configuration and state data, uninstalls the other version, installs this version, and then restores the configuration and state data.

Installing on OpenVMS

5.5 Uninstalling WEBES

If you answer **No**, the kit exits and the existing version of WEBES will not be upgraded. If desired, you can uninstall the existing WEBES copy yourself, but then not all data will be migrated upon installing the newer version as described in Section 5.2, [Installing WEBES](#).

5.5 Uninstalling WEBES

The following sections describe how to uninstall WEBES.

5.5.1 Removing a Tool

To uninstall an individual WEBES tool, rerun the install command:

```
$ @svctools_home:[common.bin]webes_install
```

Choose the menu number for the tool (1 or 2) and follow the prompts to remove it.

```
WEBES UPDATE - MAIN MENU
=====

1. SEA Menu
2. CCAT Menu
3. Start At Boot Time
4. Customer Information
5. System Information
6. Service Obligation
7. Start DESTA Director
8. Stop DESTA Director
9. Uninstall Webes
   - Fully uninstalls Webes and all installed dependent components
     such as SEA and CCAT
10. Exit
=====
```

5.5.2 Removing all of WEBES

To uninstall all of WEBES, rerun the install command:

```
$ @svctools_home:[common.bin]webes_install
```

Choose the “Uninstall WEBES” option from the update menu and follow the prompts that appear.

```
WEBES UPDATE - MAIN MENU
=====

1. SEA Menu
2. CCAT Menu
3. Start At Boot Time
4. Customer Information
5. System Information
6. Service Obligation
7. Start DESTA Director
8. Stop DESTA Director
9. Uninstall Webes
```



```
- Fully uninstalls Webes and all installed dependent components
  such as SEA and CCAT
10. Exit
=====
```

5.5.3 Clusters

To uninstall WEBES on cluster, run the following install command:

```
$ @svctools_home:[common.bin]webes_install
```

Choose the "Uninstall WEBES" option from the update menu and follow the prompts that appear. WEBES will be uninstalled from all nodes of the cluster. Make sure the other nodes in the cluster can access the WEBES install directory on the node where you logged on.

Installing on OpenVMS

5.5 Uninstalling WEBES

Glossary

A

access ID

An alphanumeric string that identifies a customer. Enterprise customers probably will have more than one ID. (They may be assigned one per site, for example.) Other systems may refer to this alphanumeric string as the service ID.

ACHS

Automatic Call Handling System. Within the service provider's customer service center, ACHS accepts incoming event analysis messages that were initiated by [SICL](#).

Automatic Call Handling System

See [ACHS](#).

C

CADC

Crash Analysis Data Collector. On Windows systems, CADC is required before the system can collect operating system failure information and format it into a footprint that [CCAT](#) can then analyze. The OpenVMS operating system comes with built-in utilities that create such footprints.

CCAT

Computer Crash Analysis Tool. CCAT is a remote operating system failure analysis tool and is a [WEBES](#) component.

Computer Crash Analysis Tool

See [CCAT](#).

Glossary

D

Crash Analysis Data Collector

See [CADC](#).

customer service gateway

The [PRS](#) system that connects customer managed systems with the outside world. Events from the managed systems are accumulated to a single customer service gateway platform on the customer premises for transmission to the service provider.

D

DESTA

Distributed Enterprise Service Tools Architecture. DESTA is the engineering code name for the [WEBES](#) software suite architecture. Consider any references to DESTA to be roughly synonymous with WEBES itself.

Distributed Enterprise Service Tools Architecture

See [DESTA](#).

DHCP

Dynamic Host Configuration Protocol. DHCP is a protocol for automatic TCP/IP configuration that provides dynamic and static address allocation and management.

DSNLink

A service tool that allows two-way [SICL](#) communications between a customer system and a service provider system.

Dynamic Host Configuration Protocol

See [DHCP](#).

I

Instant Support Enterprise Edition

See [ISEE](#).

ISEE

Instant Support Enterprise Edition. HP ISEE automates remote support over the Internet by using electronic notifications similar to those from [SICL](#) or [PRS](#). ISEE service providers can use remote diagnostic scripts to analyze supported systems and devices.

J

Java Development Kit

See [JDK](#).

Java Runtime Environment

See [JRE](#).

Java Virtual Machine

See [JVM](#).

JDK

Java Development Kit. The JDK is a set of development tools used for creating Java applications, such as [SEA](#).

JRE

Java Runtime Environment. JRE is runtime code that enables Java applications to be distributed freely.

JVM

Java Virtual Machine (or Java VM). The JVM is an abstract computing machine with an instruction set and various memory areas. The JVM understands the Java class file, which contains its instructions. The JVM is part of the JDK, and part of better versions of various browsers.

P

PCSI

POLYCENTER Software Installation. PCSI is a software installation and management tool for OpenVMS systems. PCSI can package, install, remove, and manage software products.

POLYCENTER Software Installation

See [PCSI](#).

Proactive Remote Service

See [PRS](#).

Glossary

Q

PRS

Proactive Remote Service. PRS lets customer systems self-monitor and securely report problems and events to a service provider. In addition, service representatives can securely connect back to a remote customer system for non-disruptive repair and maintenance. PRS uses [WorldWire](#) and is the next evolution from the original [SICL](#) service offering.

Q

QSAP

Qualified Service Access Point. QSAP is an older name for the [customer service gateway](#).

Qualified Service Access Point

See [QSAP](#).

R

RCM

Revision and Configuration Management. In versions prior to 4.2, RCM was a [WEBES](#) component that collected configuration, revision, and patch data from supported systems.

Revision and Configuration Management

See [RCM](#).

S

SEA

System Event Analyzer. SEA is a remote system event monitoring tool and is a [WEBES](#) component.

service ID

An alphanumeric string that identifies a customer. Enterprise customers probably will have more than one ID. (They may be assigned one per site, for example.) Other systems may refer to this alphanumeric string as the access ID.

SICL

System Initiated Call Logging. SICL uses [DSNLink](#) to send fault and failure messages to the service provider's customer service center. The messages are then received by [ACHS](#), analyzed, and acted upon as appropriate. The follow-up service offering to SICL is [PRS](#).

Simple Mail Transfer Protocol

See [SMTP](#).

SMTP

Simple Mail Transfer Protocol. SMTP is a TCP/IP protocol governing email transmission and reception.

System Event Analyzer

See [SEA](#).

System Initiated Call Logging

See [SICL](#).

T**TCP/IP**

Transmission Control Protocol/Internet Protocol. TCP/IP provides communication between computers across interconnected networks, even when the computers have different hardware architectures and operating systems.

Transmission Control Protocol/Internet Protocol

See [TCP/IP](#).

W**WCC**

WEBES Common Components. The WCC are required portions of WEBES that allow the tool suite to function as an integrated installation. The WCC are separate from the individual tools in the WEBES suite ([SEA](#) and [CCAT](#)) and are almost always transparent to the user. See also [WCCProxy](#).

WCCProxy

Like the [WCC](#), the WCCProxy is another required part of WEBES. After WEBES installation, the WCCProxy appears as a separately installed kit and represents WEBES functionality not developed in the Java environment. The WCCProxy contains functions that allow WEBES to interact properly with the operating system and with the ISEE Client.

Web-Based Enterprise Services

See [WEBES](#).

Glossary

WEBES

Web-Based Enterprise Services. WEBES is an integrated set of web-enabled service tools that includes the System Event Analyzer ([SEA](#)) and Computer Crash Analysis Tool ([CCAT](#)), as well as the required components [WCC](#) and [WCCProxy](#). See also [DESTA](#).

WEBES Common Components

See [WCC](#).

WorldWire

A service tool that allows for secure two-way [PRS](#) communication between a customer system and a service provider system.